

Total Approx. Floor Area 799 Sq.Ft. (74.2 Sq.M.)  
Whilst every attempt has been made to ensure the accuracy of the floor plan contained here, measurements of doors, windows, rooms and any other items are approximate and no responsibility is taken for any error, omission, or mis-statement. This plan is for illustrative purposes only and should be used as such by any prospective purchaser. The services, systems and appliances shown have not been tested and no guarantee as to their operability or efficiency can be given  
Made with Metropix ©2018



**IMPORTANT:** These property details are set out as a general guideline only and do not constitute any part of an offer or contract. Any services, equipment, fittings or central heating systems have not been tested and no warranty is given or implied that these are in working order. Buyers are advised to obtain verification from the solicitor or surveyor. Fixtures, fittings and other items are not included unless specified. All measurements, distances and areas are approximate, and for guidance only. Room measurements are taken to the nearest 3" and prospective buyers are advised to check these for any particular purpose, e.g fitted carpets and furniture.

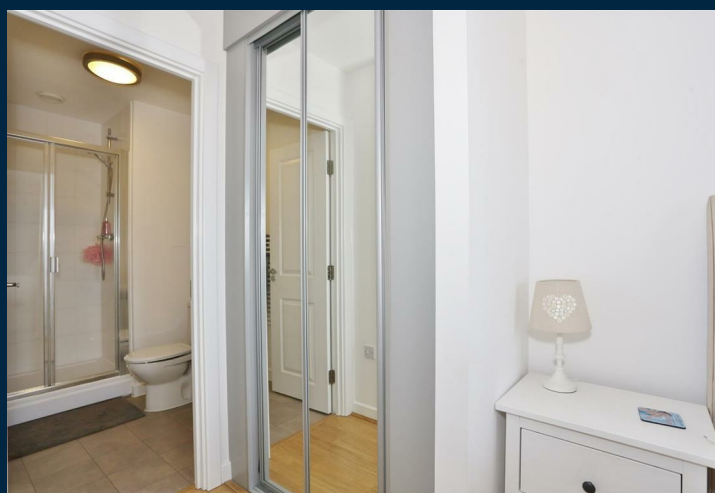
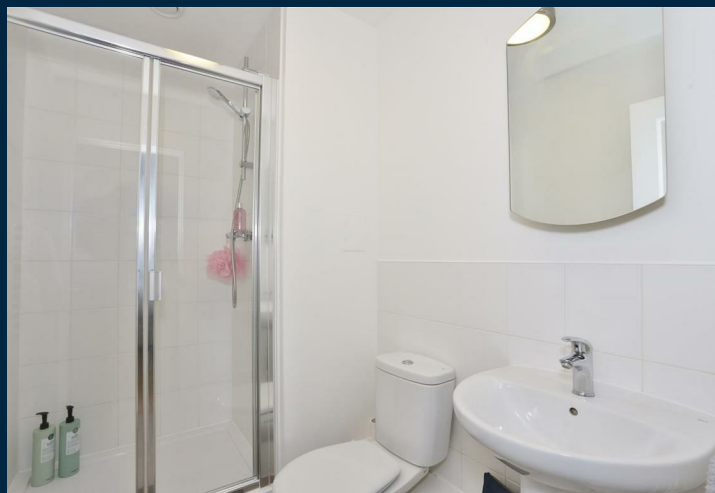


## **Shetland House Belvedere**

**Offered to the market is this modern two bedroom flat which is in beautiful condition and Available towards the middle of August.**

**The property itself comprises of an open plan layout with the kitchen, lounge and dining area all in one. There are two bedrooms, the master bedroom with an en suite shower room. The bathroom is just off the hallway and there is plenty of storage throughout the property.**

**There is secure allocated parking for this flat and also parking within the development.**



- **Stunning Flat**
- **Two Bedrooms/Master Bedroom With En Suite Shower Room**
- **Open Plan Kitchen/Diner/Lounge**
- **Two Bathrooms**
- **Area: 799 Sq.Ft**
- **EPC: C 73**
- **Private Parking**
- **Hotel and Restaurants Located Within Development**
- **Call Today**
- **Available Mid August**