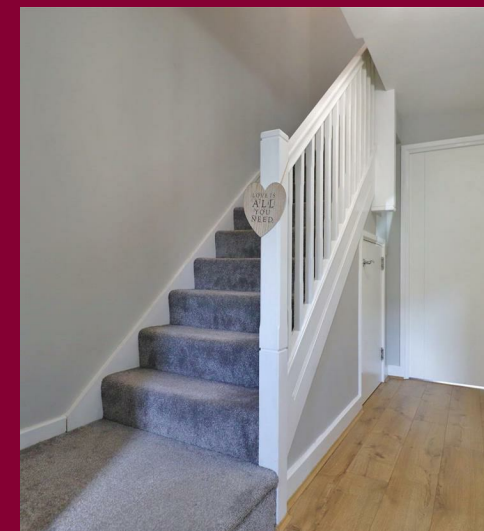
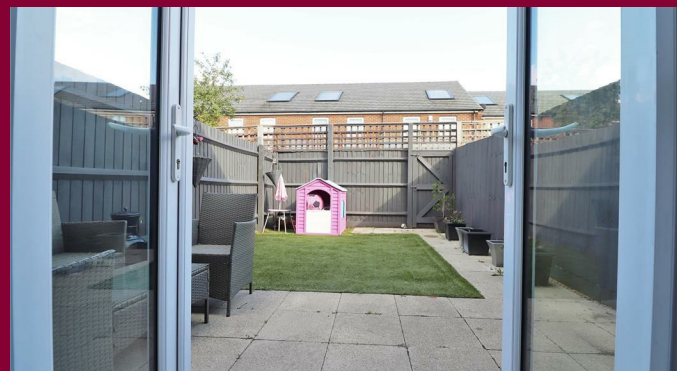


rightmove

Zoopa.co.uk

PrimeLocation.com

onTheMarket.com



**IMPORTANT:** These property details are set out as a general guideline only and do not constitute any part of an offer or contract. Any services, equipment, fittings or central heating systems have not been tested and no warranty is given or implied that these are in working order. Buyers are advised to obtain verification from the solicitor or surveyor. Fixtures, fittings and other items are not included unless specified. All measurements, distances and areas are approximate, and for guidance only. Room measurements are taken to the nearest 3" and prospective buyers are advised to check these for any particular purpose, e.g fitted carpets and furniture.

**9 Midfield Parade, Mayplace Road East  
Bexleyheath  
DA7 6NB**

**01322 557457  
barnehurst@anthonymartin.co.uk  
anthonymartin.co.uk**

**Guide Price  
£325,000**



## Siddeley Road Crayford

Positioned on the desirable 'Vickers Green' development is this beautiful two bedroom terraced home, which would be perfect for first time buyers looking to get on the housing ladder and those that are looking for that little bit of 'Wow'.

The lounge is to the rear and has direct access to a low maintenance garden which has artificial grass, the ideal space for entertaining guests in with it being level access throughout the whole of downstairs.

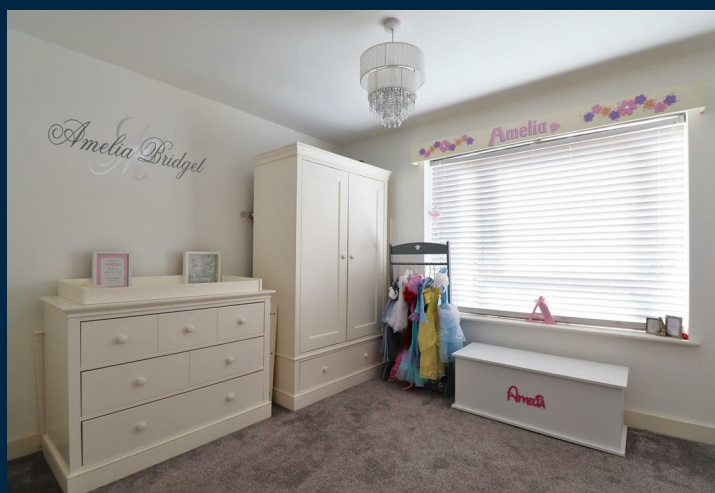
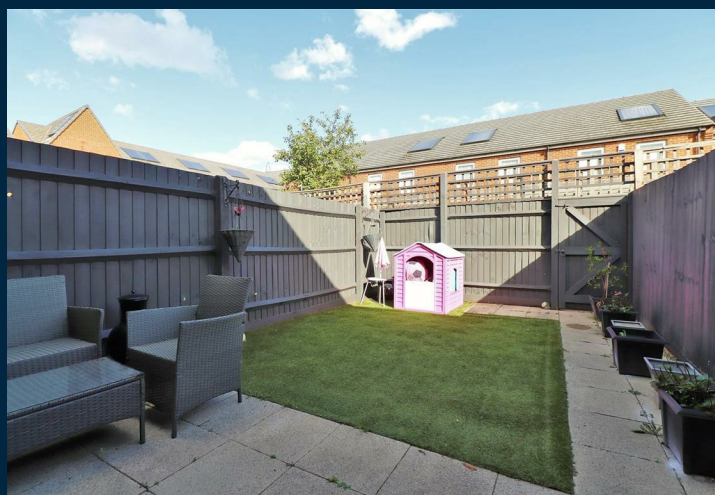
The kitchen is to the front and has plenty of storage cupboards and preparation space to cook up a storm.

Also on the ground floor is a WC.

Upstairs has two double bedrooms with the main bedroom having its very own private en suite shower room, in addition to the bathroom, so in total there are three WC's in the property!

There is a driveway to the front.

Please note that there is a yearly service charge with further details upon request.



- TWO BEDROOM HOME
- PERFECT FOR FIRST TIME BUYERS
- DOWNSTAIRS WC
- EN SUITE TO MAIN BEDROOM
- CLOSE TO HABERDASHERS ASKES
- LOW MAINTENANCE REAR GARDEN
- STILL WITHIN NHBC WARRANTY
- EPC B 84
- 753 SQ FT

