

IMPORTANT: These property details are set out as a general guideline only and do not constitute any part of an offer or contract. Any services, equipment, fittings or central heating systems have not been tested and no warranty is given or implied that these are in working order. Buyers are advised to obtain verification from the solicitor or surveyor. Fixtures, fittings and other items are not included unless specified. All measurements, distances and areas are approximate, and for guidance only. Room measurements are taken to the nearest 3" and prospective buyers are advised to check these for any particular purpose, e.g fitted carpets and furniture.

**9 Midfield Parade, Mayplace Road East
Bexleyheath
DA7 6NB**

**01322 557457
barnehurst@anthonymartin.co.uk
anthonymartin.co.uk**

**Guide Price
£525,000**

Beechcroft Avenue Bexleyheath

This is a stunning family home that has to be viewed internally to fully appreciate what I am about to explain. From the very moment you step foot inside, the feeling is immense, with each corner of this bungalow carefully designed by the current owners. A bit of shabby chic here and there makes this quite unique.

Sit and relax in the large spacious lounge at the front and let yourself unwind after a hard day at the office. Or you could entertain guests as the size certainly caters for large parties.

Where better to serve up the nibbles than from the stunner of a kitchen/diner which has direct access to the garden.

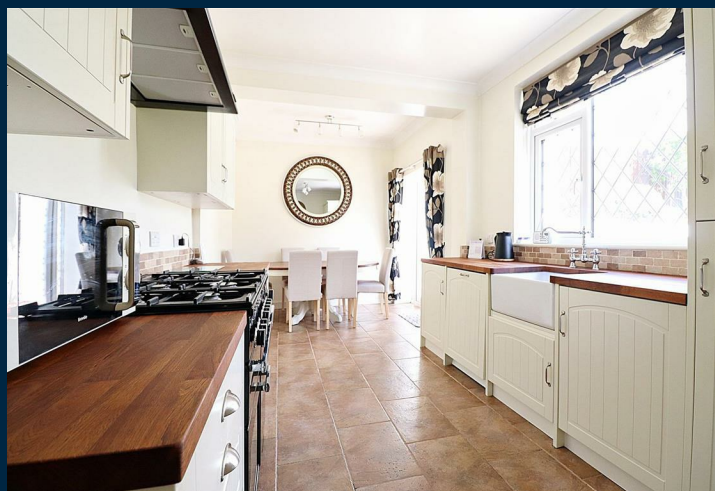
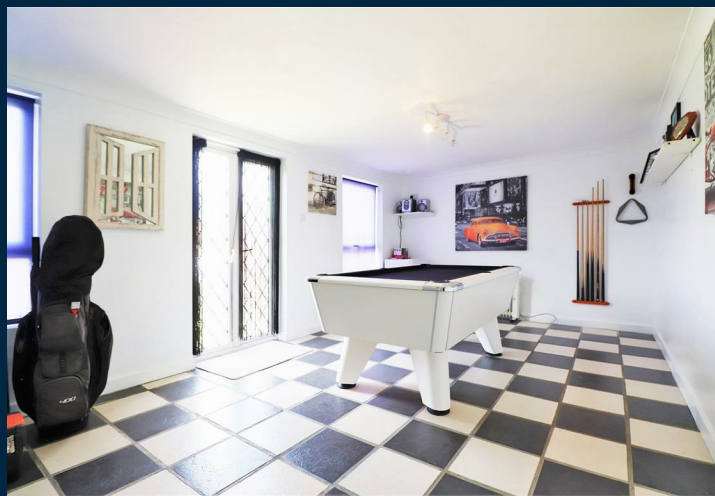
The bath/shower room is fit for a king or queen, with its stand out features such as a roll top bath and large separate shower. There is a further separate WC.

What's even better is that all three bedrooms are doubles.

The fun continues outside and at the end of the garden in the games room. A brick built building to keep the kids entertained while the adults soak up the sun on the paved BBQ area.

There is private parking on the front and plenty of parking on the road on a first come first served basis.

This is a home you do not want to miss. Take my word for it!



- **THREE BEDROOM DETACHED BUNGALOW**
- **STUNNING CONDITION THROUGHOUT**
- **LARGE BATH/SHOWER ROOM WITH ROLL TOP BATH**
- **SEPARATE 2ND WC**
- **OUTBUILDING TO THE REAR (PERFECT FROM HOME WORKING)**
- **POPULAR ABC ROAD LOCATION**
- **CLOSE TO GREAT PRIMARY SCHOOLS**
- **1403 SQ FT**
- **EPC D 62**