

rightmove

Zoopa.co.uk

PrimeLocation.com

onTheMarket.com



**IMPORTANT:** These property details are set out as a general guideline only and do not constitute any part of an offer or contract. Any services, equipment, fittings or central heating systems have not been tested and no warranty is given or implied that these are in working order. Buyers are advised to obtain verification from the solicitor or surveyor. Fixtures, fittings and other items are not included unless specified. All measurements, distances and areas are approximate, and for guidance only. Room measurements are taken to the nearest 3" and prospective buyers are advised to check these for any particular purpose, e.g fitted carpets and furniture.

**3 Princess Parade Crofton Road  
Orpington  
BR6 8NP**

**01689 850 111  
locksbottom@anthonymartin.co.uk  
anthonymartin.co.uk**

**Offers In Excess Of  
£550,000**



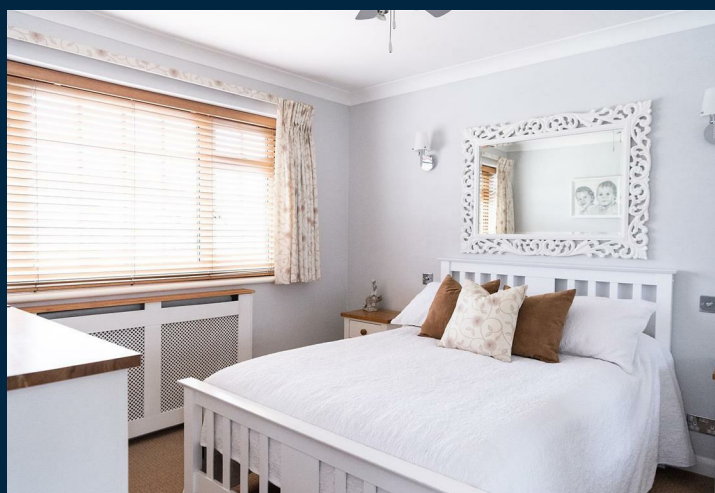
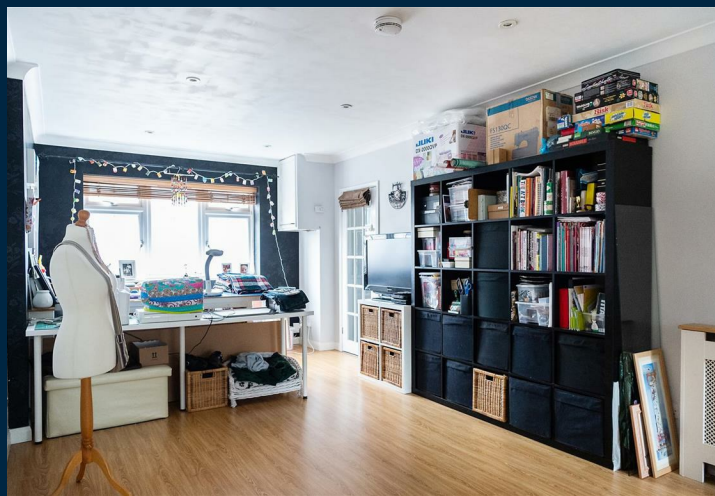
## Capel Close Bromley

**Guide Price £550,000**

**This 4 bedroom property in excess of 1500 SQ FT is located in a quiet CUL DE SAC and has been sympathetically extended to provide additional living space to the ground floor, and a CONSERVATORY overlooking the garden.**

**This deceptively spacious house provides all the living space for a family and has a good flow through the rooms. The porch leads into the entrance hall with access through to the kitchen and receptions rooms. The 23' annexe with fitted wardrobes has access at the rear to a shower room. The formal reception provides ample space for a separate lounge to the front and dining space, opening into the kitchen at the rear. The fully integrated kitchen with breakfast bar is the hub of this home, with plenty of storage, a breakfast area and access into the 17' wide conservatory where you can enjoy the garden. To the first floor there are 3 bedrooms and a family bathroom**

**Call the office today to book your viewing**



- **4 Bedrooms**
- **Annexe**
- **Conservatory**
- **Cul De Sac Location**
- **Driveway**
- **2 Bathrooms**
- **Extended**
- **Excellent Transport Links**
- **Good Schools Catchement**
- **EPC D56**

