



## MAIN ROAD

SIDCUP

£2,495 PCM

# Main Road

SIDCUP

---

""Not Available to students or HMO's ""

Completely refurbished and ready to move into!

This five bedroom chalet has been finished to a high standard and is located in a prime position in Sidcup, on the borders of New Eltham.

The downstairs has two large reception rooms, a beautifully designed kitchen breakfast room with quartz work tops, a study come bedroom and a bathroom.

Upstairs has four bedrooms and a further shower room.

## SUMMARY OF ACCOMMODATION

### ENTRANCE DOOR TO HALLWAY

#### LOUNGE

16'5 x 12'6 (5.00m x 3.81m)

#### DINING ROOM

15'9 x 12'6 (4.80m x 3.81m)

#### KITCHEN/BREAKFAST ROOM

19'8 x 11'5 (5.99m x 3.48m)

#### BATHROOM

7'3 x 7'3 (2.21m x 2.21m)

#### BEDROOM 5/STUDY

10'7 x 7'7 (3.23m x 2.31m)

### 1ST FLOOR LANDING

#### BEDROOM 1

16'5 x 11'11 (5.00m x 3.63m)

#### BEDROOM 2

11'11 x 9'2 (3.63m x 2.79m)

#### BEDROOM 3

12'10 x 7'10 (3.91m x 2.39m)

#### BEDROOM 4

8'5 x 7'7 (2.57m x 2.31m)

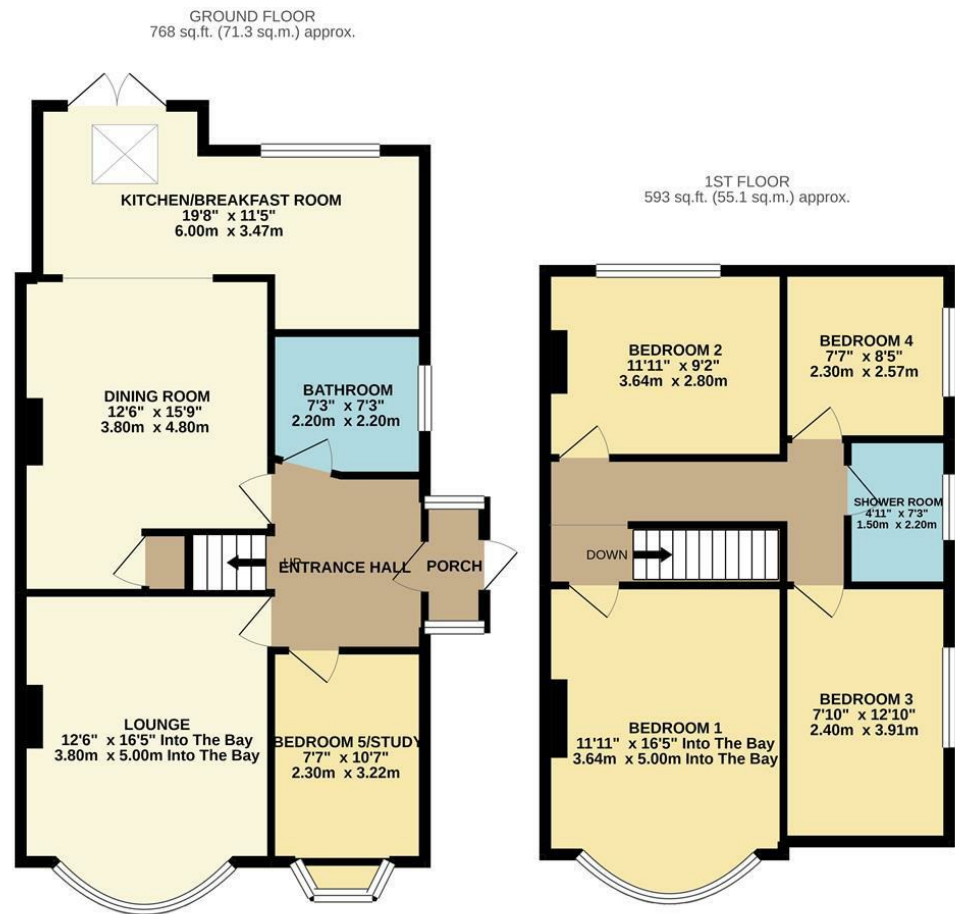
#### SHOWER ROOM

7'3 x 4'11 (2.21m x 1.50m)

# Main Road

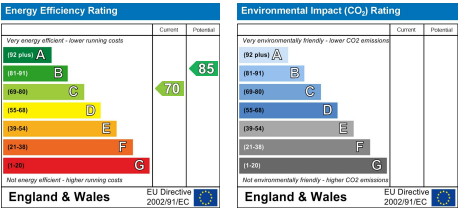
SIDCUP

APPROX. GROSS INTERNAL FLOOR AREA sq ft



TOTAL FLOOR AREA : 1361 sq.ft. (126.5 sq.m.) approx.

Whilst every attempt has been made to ensure the accuracy of the floorplan contained here, measurements of doors, windows, rooms and any other items are approximate and no responsibility is taken for any error, omission or mis-statement. This plan is for illustrative purposes only and should be used as such by any prospective purchaser. The services, systems and appliances shown have not been tested and no guarantee as to their operability or efficiency can be given.  
Made with Metropix ©2021



# Main Road

SIDCUP

---

