

GROUND FLOOR  
APPROX. FLOOR  
AREA 404 SQ.FT.  
(37.5 SQ.M.)

1ST FLOOR  
APPROX. FLOOR  
AREA 368 SQ.FT.  
(34.2 SQ.M.)

2ND FLOOR  
APPROX. FLOOR  
AREA 292 SQ.FT.  
(27.1 SQ.M.)

TOTAL APPROX. FLOOR AREA 1064 SQ.FT. (98.8 SQ.M.)

Whilst every attempt has been made to ensure the accuracy of the floor plan contained here, measurements of doors, windows, rooms and any other items are approximate and no responsibility is taken for any error, omission, or mis-statement. This plan is for illustrative purposes only and should be used as such by any prospective purchaser. The services, systems and appliances shown have not been tested and no guarantee as to their operability or efficiency can be given.  
Made with Metropix ©2020

**rightmove**

**Zoopa.co.uk**

**PrimeLocation.com**

**OnTheMarket.com**



**IMPORTANT:** These property details are set out as a general guideline only and do not constitute any part of an offer or contract. Any services, equipment, fittings or central heating systems have not been tested and no warranty is given or implied that these are in working order. Buyers are advised to obtain verification from the solicitor or surveyor. Fixtures, fittings and other items are not included unless specified. All measurements, distances and areas are approximate, and for guidance only. Room measurements are taken to the nearest 3" and prospective buyers are advised to check these for any particular purpose, e.g fitted carpets and furniture.

**16 Market Street  
Dartford  
DA1 1ET**

**01322 583 033  
dartford@anthonymartin.co.uk  
anthonymartin.co.uk**

**Offers Over  
£390,000**



# Princes Avenue

## Dartford

**OPEN DAY FULLY BOOKED!!!!**

This is a beautiful, extended, four bedroom semi-detached house that has been loved and cared for over the years by the current owners. Offering good transport links as well as being close to amenities and Darenth Valley hospital, this house is a must view.

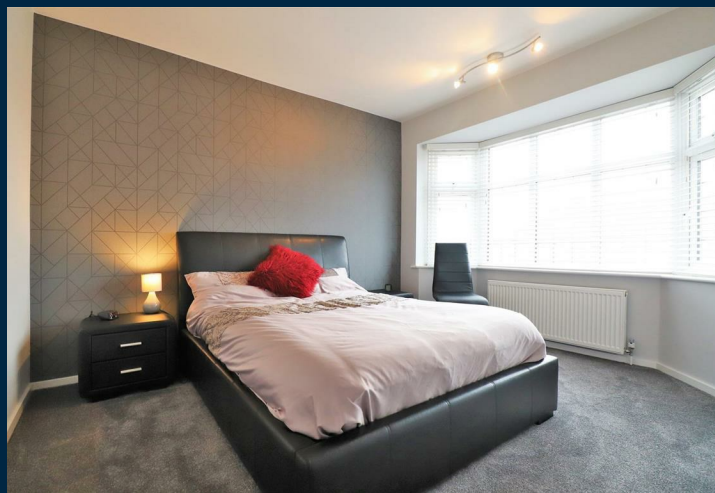
The property is set out over three floors with the ground floor offering a spacious lounge, as well as a stunning open plan kitchen diner which is perfect for hosting friends and family.

To the first floor there are two double bedrooms and a single bedroom, plus a contemporary family bathroom. The loft has been converted to hold a good size double bedroom along with an en suite shower room. The garden has side access from the front and is relatively low maintenance with a lawn and patio area as well as a shed for storage. There is also a driveway at the front providing parking for up to two cars.

If you are looking for a family home that is ready to move into then this is a must see for you.

Located on the outskirts of Dartford town centre and minutes away from Dartford mainline station makes this property fantastic for commuters or someone looking for a family home. With an abundance of good schools nearby, education is covered for all ages. The M25/A2 has great links to all major road networks locally. Bluewater Shopping Centre is the perfect spot for entertaining, shopping and restaurants to keep you busy and is only a 10 minute drive away. Ebbsfleet International Train Station is 15 minutes drive and allows access to the buzz of London in 19 minutes, or Paris within 2 hours.

**Call Anthony Martin Estate Agents to view today.**



- **4 Bedroom End Terrace House**
- **En-Suite Shower Room**
- **Modern Throughout**
- **Kitchen Diner**
- **Perfect Family Home**
- **Extended**
- **Off Street Parking**
- **Good Transport Links**
- **Close To Amenities**
- **Good Schools**

