



## REGENT'S PLACE

LONDON

£5,000

# Regent's Place

LONDON

---

Situated in a beautiful close comprising of 5 properties is this stunning, 4 bedroom detached property which is available for occupancy towards the beginning of November.

This bright and spacious home boasts a beautiful Kitchen/Diner, with doors leading on to the garden, whilst also on the ground floor is a reception room, and W/C.

The second floor is the true heart of the home, with a great size living room for entertaining, with beautiful views over looking Blackheath common, as well as a home office and Bedroom with an En-Suite.

The third floor boasts 3 double bedrooms, with the master having the En-Suite, as well as the family bathroom.

Properties in Regents Place and of this size of few and far between, so please call us today on 01322 47 99 33 (opt 2) to book your internal viewing.

## SUMMARY OF ACCOMMODATION

**Entrance Hall**

**Kitchen/Diner**

**Reception Room**

**W/C**

**Garage**

**Living Room**

**Office**

**Bedroom**

**En-Suite**

**Landing**

**Bedroom 1**

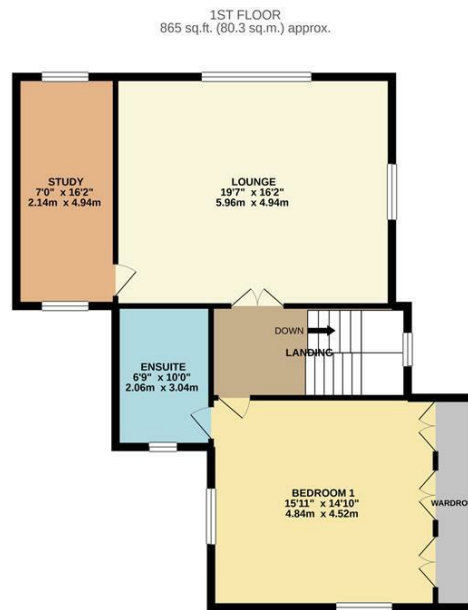
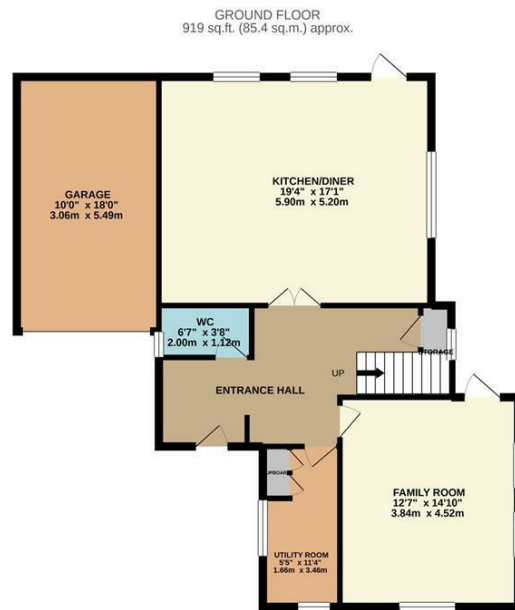
**En-Suite**

**Bedroom 2**

**Bedroom 3**

LONDON

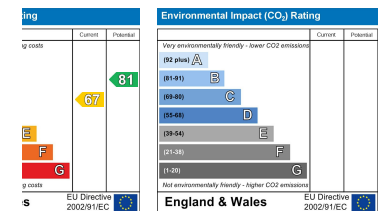
APPROX. GROSS INTERNAL FLOOR AREA sq ft



TOTAL FLOOR AREA : 2492 sq.ft. (231.5 sq.m.) approx.

Whilst every attempt has been made to ensure the accuracy of the floorplan contained here, measurements of doors, windows, rooms and any other items are approximate and no responsibility is taken for any error, omission or mis-statement. This plan is for illustrative purposes only and should be used as such by any prospective purchaser. The services, systems and appliances shown have not been tested and no guarantee as to their operability or efficiency can be given.

Made with Metropix ©2021



# Regent's Place

LONDON

---



7 Bourne Road, Bexley, DA5 1LW

**01322 47 99 33**

bexley@anthonymartin.co.uk