

Anthony Martin

Estate Agents



Neptune Walk, Erith

£850



Anthony Martin
Estate Agents

9 Midfield Parade, Mayplace Road East, Bexleyheath, Kent, DA7 6NB

01322 557457

barnehurst@anthonymartin.co.uk

www.anthonymartin.co.uk

Neptune Walk, Erith

- Ground Floor Flat
- Refurbished Kitchen And Bathroom
- Available NOW
- EPC: C 69
- Close To Transport Links
- Spacious Lounge/Diner
- Quiet Location
- Close To Erith Town Centre
- Large Double Bedroom
- Call Today

Situated in a quiet spot at the back of a popular development is this charming one bedroom ground floor apartment.

The property comprises of a spacious lounge/diner, a bright and airy open space with direct access into the kitchen. There is also space for a dining table to gather with a few friends for a nice meal in.

Off the hallway is a double bedroom and also a modern bathroom, this also has been refurbished.

Allocated parking is with the property.



Lounge/Diner

15'6 x 12 (4.72m x 3.66m)

Kitchen

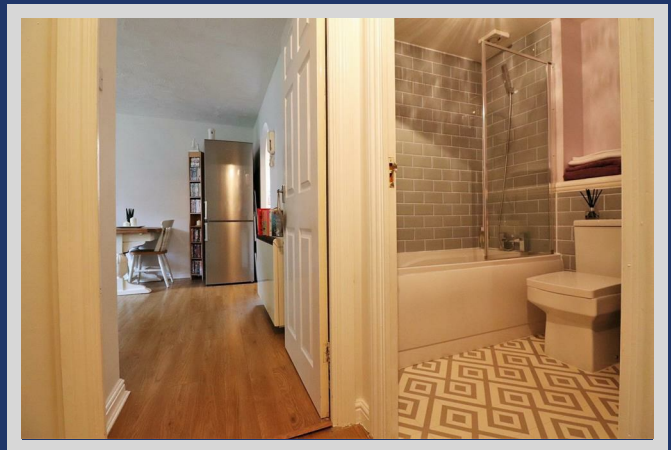
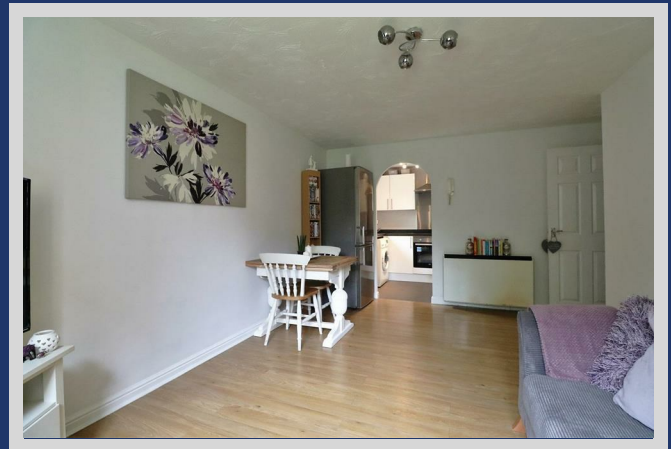
8'10 x 6'4 (2.69m x 1.93m)

Bedroom

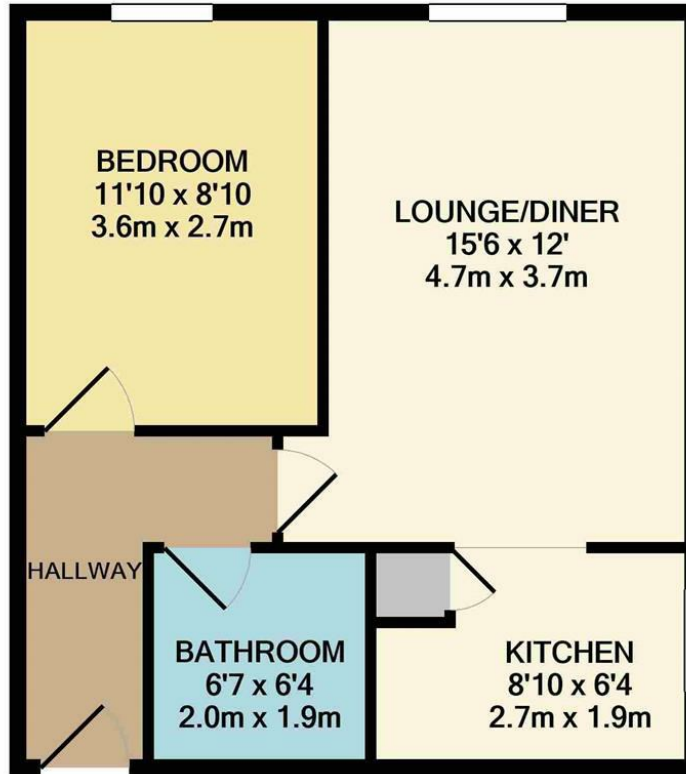
11'10 x 8'10 (3.61m x 2.69m)

Bathroom

6'7 x 6'4 (2.01m x 1.93m)







Whilst every attempt has been made to ensure the accuracy of the floor plan contained here, measurements of doors, windows, rooms and any other items are approximate and no responsibility is taken for any error, omission, or mis-statement. This plan is for illustrative purposes only and should be used as such by any prospective purchaser. The services, systems and appliances shown have not been tested and no guarantee as to their operability or efficiency can be given
Made with Metropix ©2020



IMPORTANT: we would like to inform prospective purchasers that these sales particulars have been prepared as a general guide only. A detailed survey has not been carried out, nor the services, appliances and fittings tested. Room sizes should not be relied upon for furnishing purposes and are approximate. If floor plans are included, they are for guidance only and illustration purposes only and may not be to scale. If there are any important matters likely to affect your decision to buy, please contact us before viewing the property.