



KNOCKHALL ROAD

GREENHITHE

£750 PCM

Knockhall Road

GREENHITHE

Anthony Martin Estate Agents are delighted to offer yo TO LET this spacious top floor apartment with panoramic views overlooking fields. The property is in good condition throughout including a modern fitted kitchen. The apartment is fully double glazed and gas centrally heated and is also near to Greenhithe and Swanscombe Train Stations. Call now to view on 01322 47 33 55. EPC: C - Available from Early July

SUMMARY OF ACCOMMODATION

Communal Entrance

Hallway

Lounge Dining Room

14'6 x 11'10 (4.42m x 3.61m)

Kitchen

14'4 x 7'6 (4.37m x 2.29m)

Bedroom

13'5 x 8'10 (4.09m x 2.69m)

Bathroom

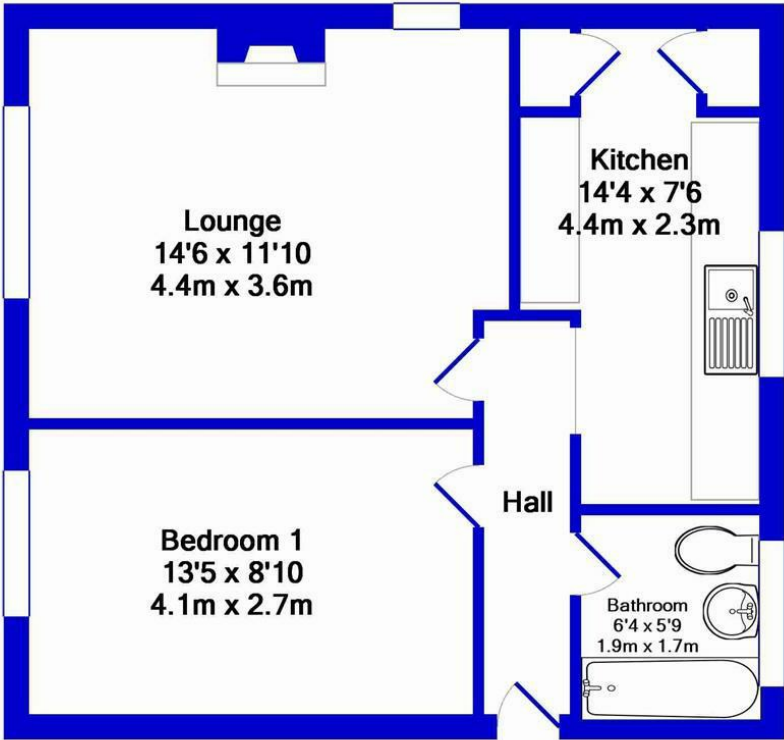
6'4 x 5'9 (1.93m x 1.75m)

Communal Garden

Knockhall Road

GREENHITHE

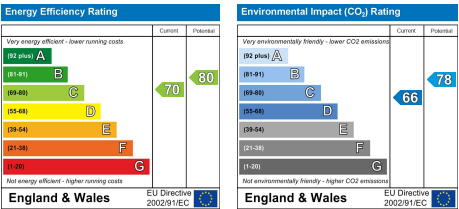
APPROX. GROSS INTERNAL FLOOR AREA 454.00 sq ft



Total Approx. Floor Area 454 Sq.Ft. (42.1 Sq.M.)

Whilst every attempt has been made to ensure the accuracy of the floor plan contained here, measurements of doors, windows, rooms and any other items are approximate and no responsibility is taken for any error, omission, or mis-statement. This plan is for illustrative purposes only and should be used as such by any prospective purchaser. The services, systems and appliances shown have not been tested and no guarantee as to their operability or efficiency can be given

Made with Metropix ©2015



Knockhall Road

GREENHITHE



45 High Street, Swanscombe, Kent, DA10 0AG

www.anthonymartin.co.uk www.rightmove.co.uk www.zoopla.co.uk www.primelocation.com

01322 473355

swanscombe@anthonymartin.co.uk