

rightmove

Zoopa.co.uk

PrimeLocation.com

onTheMarket.com



IMPORTANT: These property details are set out as a general guideline only and do not constitute any part of an offer or contract. Any services, equipment, fittings or central heating systems have not been tested and no warranty is given or implied that these are in working order. Buyers are advised to obtain verification from the solicitor or surveyor. Fixtures, fittings and other items are not included unless specified. All measurements, distances and areas are approximate, and for guidance only. Room measurements are taken to the nearest 3" and prospective buyers are advised to check these for any particular purpose, e.g fitted carpets and furniture.

16 Market Street
Dartford
DA1 1ET

01322 583 033
dartford@anthonymartin.co.uk
anthonymartin.co.uk

**Offers Over
£245,000**

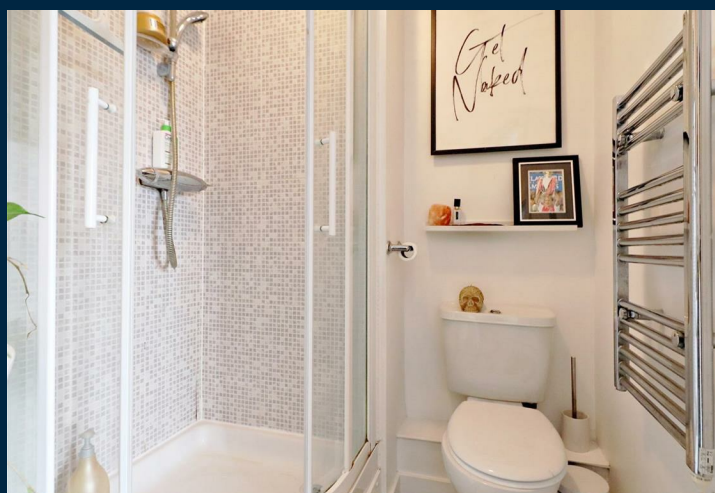
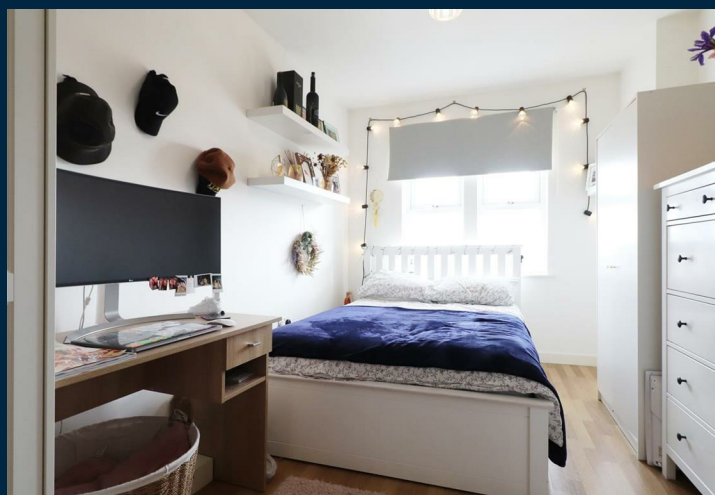
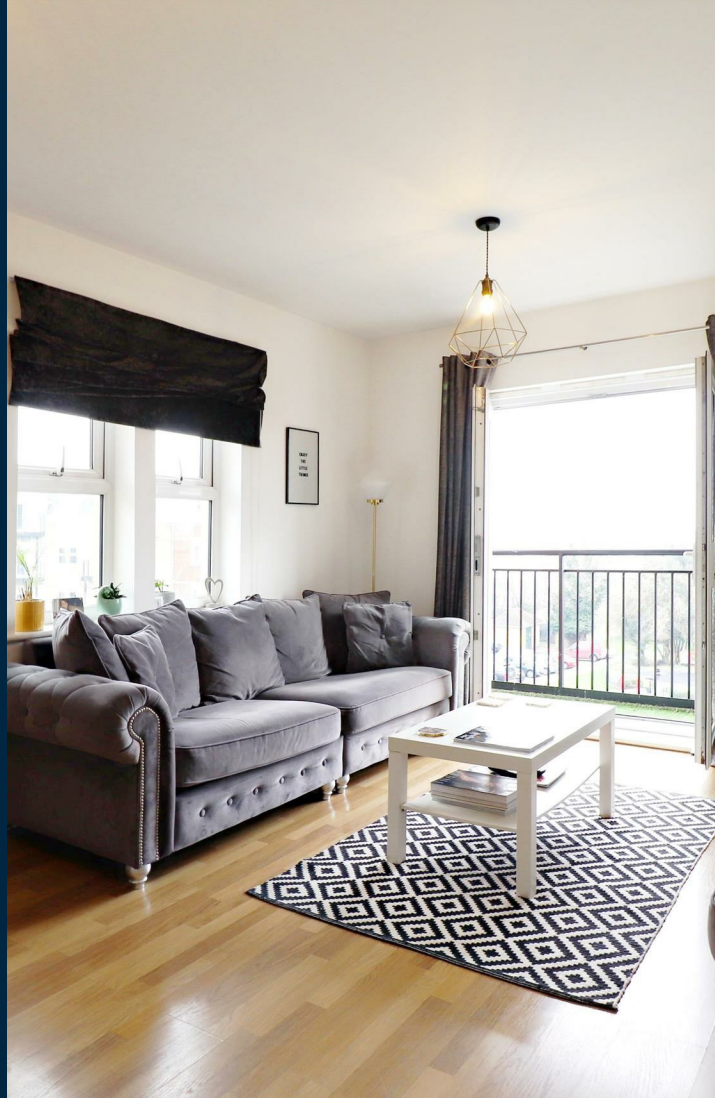
Constance Grove Dartford

This fantastic two bedroom, second floor, modern apartment is just a stones throw from Dartford Town Centre and just 0.6 miles walk to Dartford Station. The development is situated on the outskirts of Dartford Town and is ideal for those looking to be close to all of your every day essentials.

Being situated on the second floor of the building this apartment consists of a bright and airy open plan modern kitchen with a lounge/diner that has a balcony perfect for those who wish to have their own outdoor space to sit and relax on a sunny evening.

There are two spacious double bedrooms with the master bedroom benefiting an en suite shower room and a balcony. There is also a separate family bathroom. Externally there is an allocated parking space as well as plenty of parking for visitors.

With an abundance of good schools nearby, education is covered for all ages. The M25 / A2 has great links to all major road networks locally. Bluewater Shopping Centre is the perfect spot for entertaining, shopping and restaurants to keep you busy and is only a 10 minute drive away. Ebbsfleet International Train Station is 20 minutes drive and allows access to the buzz of London in 19 minutes, or Paris within 2 hours.



- **Two Double Bedroom Apartment**
- **Second Floor**
- **En Suite Shower Room**
- **Two Balconies**
- **Allocated Parking**
- **Healthy Lease**
- **0.6 Miles To Dartford Station**
- **Close To Local Amenities**

