

**IMPORTANT:** These property details are set out as a general guideline only and do not constitute any part of an offer or contract. Any services, equipment, fittings or central heating systems have not been tested and no warranty is given or implied that these are in working order. Buyers are advised to obtain verification from the solicitor or surveyor. Fixtures, fittings and other items are not included unless specified. All measurements, distances and areas are approximate, and for guidance only. Room measurements are taken to the nearest 3" and prospective buyers are advised to check these for any particular purpose, e.g fitted carpets and furniture.



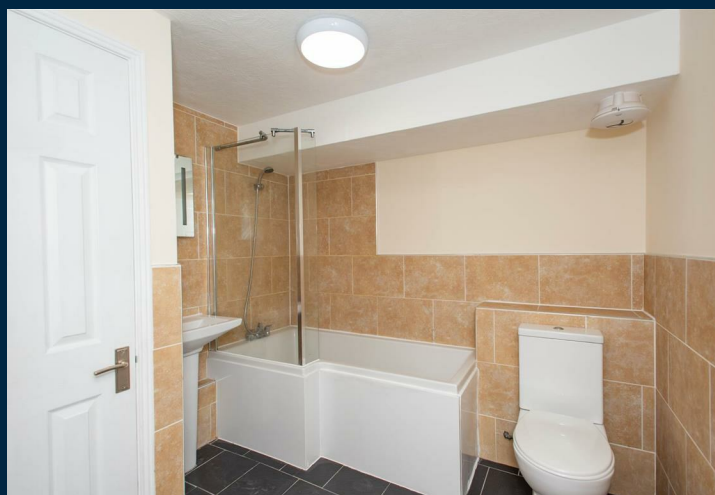
## **Starts Hill Road Farnborough**

**Anthony Martin are delighted to bring to the market this CHAIN FREE character 2 bedroom ground floor apartment forming part of the original Farnborough Primary School built in 1873. In a sought after location with bus routes serving Bromley and Orpington and close to the shops and restaurants at Locksbottom, this property is ideal for a first time buyer, downsizer or investor.**

**The property is in excess of 1000 square feet with a wonderful dual aspect lounge/diner opening into the study area/central hallway. It features 2 double bedrooms and 2 bathrooms and comes with allocated parking.**

**The apartment has a private entrance and is flooded with light from it's south facing location.**

**Having been refurbished by the current owner the property provides a blank canvas for the new owner.**



- **Chain Free**
- **Ground Floor**
- **2 Double Bedrooms**
- **2 Bathrooms**
- **2 Allocated Parking Spaces**
- **Recently Refurbished**
- **In Excess of 1000 Square Feet**
- **Close to Local Shops and Amenities**
- **Excellent Transport Links**
- **EPC E54**