

GROUND FLOOR
APPROX. FLOOR
AREA 270 SQ.FT.
(25.1 SQ.M.)

1ST FLOOR
APPROX. FLOOR
AREA 257 SQ.FT.
(23.8 SQ.M.)

TOTAL APPROX. FLOOR AREA 527 SQ.FT. (48.9 SQ.M.)

Whilst every attempt has been made to ensure the accuracy of the floor plan contained here, measurements of doors, windows, rooms and any other items are approximate and no responsibility is taken for any error, omission, or mis-statement. This plan is for illustrative purposes only and should be used as such by any prospective purchaser. The services, systems and appliances shown have not been tested and no guarantee as to their operability or efficiency can be given.
Made with Metropix ©2020



IMPORTANT: These property details are set out as a general guideline only and do not constitute any part of an offer or contract. Any services, equipment, fittings or central heating systems have not been tested and no warranty is given or implied that these are in working order. Buyers are advised to obtain verification from the solicitor or surveyor. Fixtures, fittings and other items are not included unless specified. All measurements, distances and areas are approximate, and for guidance only. Room measurements are taken to the nearest 3" and prospective buyers are advised to check these for any particular purpose, e.g fitted carpets and furniture.

9 Midfield Parade, Mayplace Road East
Bexleyheath
DA7 6NB

01322 557457
barnehurst@anthonymartin.co.uk
anthonymartin.co.uk

Guide Price
£280,000

Cheswick Close

Dartford

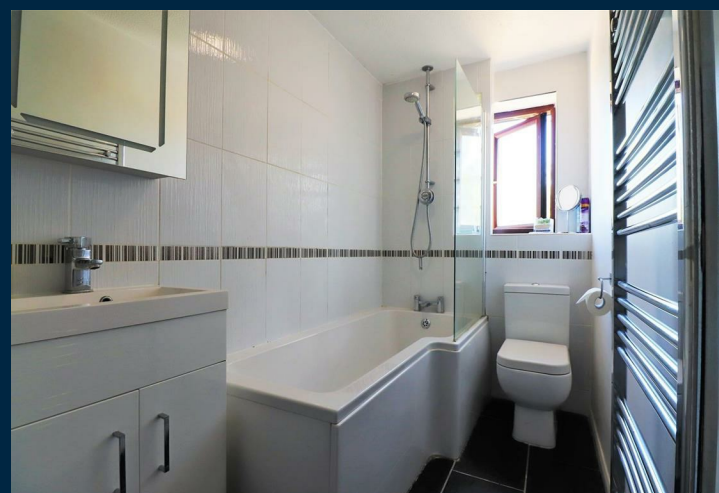
Guide Price £280,000 - £300,000

Offered to the market tucked away at the end of a cul de sac is this charming two bedroom terraced starter home. The property is within walking distance for local transport links such as Crayford train station and there are a number of bus routes available. Crayford town centre is also within walking distance for those who need to be close to shops to grab your everyday essentials.

The ground floor offers a lounge/diner with access into a modern kitchen. Doors lead out onto a low maintenance garden, perfect for those who are looking for some outside space.

The first floor offers a large double bedroom and second bedroom and a refurbished bathroom suite off the hallway.

As previously mentioned there is a private rear garden and two allocated parking spaces.



- Mid Terrace Starter Home
- Two Lovely Sized Bedrooms
- Open Plan Lounge/Diner
- Modern First Floor Bathroom
- Area: 527 Sq.Ft
- Laid To Lawn Garden
- EPC: C 71
- Two Parking Spaces
- Cul De Sac Location
- Close To, Transport Links And Amenities