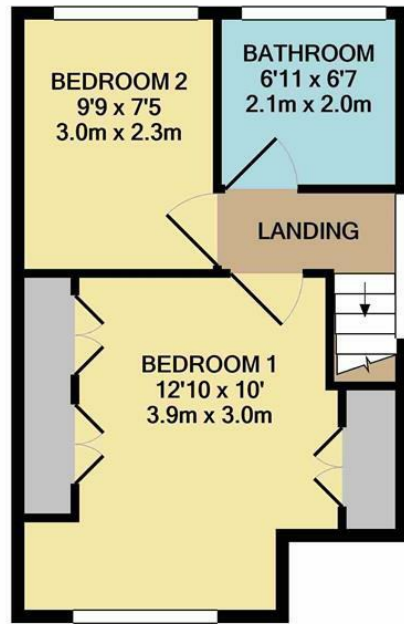


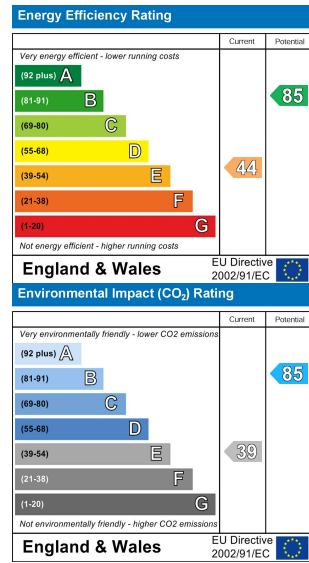
GROUND FLOOR
APPROX. FLOOR
AREA 421 SQ.FT.
(39.1 SQ.M.)



1ST FLOOR
APPROX. FLOOR
AREA 309 SQ.FT.
(28.7 SQ.M.)

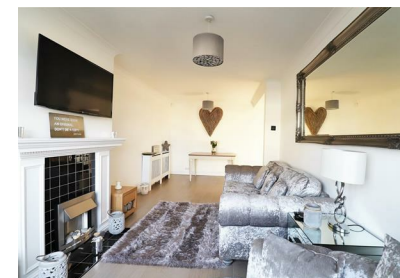
TOTAL APPROX. FLOOR AREA 730 SQ.FT. (67.8 SQ.M.)

Whilst every attempt has been made to ensure the accuracy of the floor plan contained here, measurements of doors, windows, rooms and any other items are approximate and no responsibility is taken for any error, omission, or mis-statement. This plan is for illustrative purposes only and should be used as such by any prospective purchaser. The services, systems and appliances shown have not been tested and no guarantee as to their operability or efficiency can be given
Made with Metropix ©2020



SWAISLAND ROAD
DARTFORD

Asking Price £325,000



rightmove.co.uk
The UK's number one property website

Zoopa.co.uk

PrimeLocation.com

onTheMarket.com

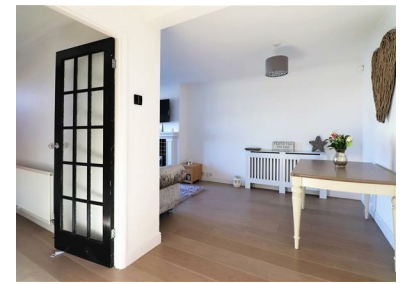
16 Market Street, Dartford, Kent, DA1 1ET

Anthony Martin
Estate Agents

01322 583 033
dartford@anthonymartin.co.uk
www.anthonymartin.co.uk

IMPORTANT: we would like to inform prospective purchasers that these sales particulars have been prepared as a general guide only. A detailed survey has not been carried out, nor the services, appliances and fittings tested. Room sizes should not be relied upon for furnishing purposes and are approximate. If floor plans are included, they are for guidance only and illustration purposes only and may not be to scale. If there are any important matters likely to affect your decision to buy, please contact us before viewing the property.

Anthony Martin
Estate Agents



Situated in a highly desirable area in West Dartford close to the Grammar schools and also between Crayford and Dartford town centre is this well presented two bedroom end of terrace house. The property itself is within walking distance to local amenities and local transport links ideal for those commuters who need easy access to London. This is a perfect opportunity for those looking to up size within the area and looking for a property which has been updated throughout, with no onward chain.

The ground floor offers a generous size lounge/diner and features a bay frontage, modern kitchen. The rear garden is just as impressive, it has been landscaped where you will find an area mainly laid to lawn with decked area, perfect for the adults and the children. The first floor offers two bedrooms and modern bathroom.

The front garden could also be changed for off street parking, subject to local planning.

Situated near to sought after primary and secondary schools. Dartford Grammar School - Dartford Grammar School for Girls - Leigh City Technology -Dartford Science & Technology College all sit within a mile of the property. St Anselm's Catholic Primary School - Dartford Bridge Community Primary School - The Gateway Primary Academy - Dartford Primary Academy all sitting within 1.5 Miles from the property. In addition, Dartford town centre and train station are within close proximity with Dartford Crossing and the A2 / M25 only a few minutes drive away.

2 BEDROOMS • 1 RECEPTION ROOMS • 1 BATHROOMS

SWAISLAND ROAD

DARTFORD

- Two Bedroom
- Terraced House
- Impressive Lounge/Diner
- Modern Kitchen
- Upstairs Modern Bathroom
- Good Size Rear Garden
- Off Street Parking Potential (STLP)
- Close To Popular Schools
- Close To Dartford & Crayford Mainline Station
- Offered With No Onward Chain

