

IMPORTANT: These property details are set out as a general guideline only and do not constitute any part of an offer or contract. Any services, equipment, fittings or central heating systems have not been tested and no warranty is given or implied that these are in working order. Buyers are advised to obtain verification from the solicitor or surveyor. Fixtures, fittings and other items are not included unless specified. All measurements, distances and areas are approximate, and for guidance only. Room measurements are taken to the nearest 3" and prospective buyers are advised to check these for any particular purpose, e.g fitted carpets and furniture.

**9 Midfield Parade, Mayplace Road East
Bexleyheath
DA7 6NB**

**01322 557457
barnehurst@anthonymartin.co.uk
anthonymartin.co.uk**

**Offers Over
£475,000**

Plaxtol Road

Erith

Offered to the market in exceptional condition throughout is this four bedroom semi detached family home in Erith, which is located on the borders of Bexleyheath.

From start to finish, each part of this house has been carefully designed and looked after over the years, leaving no stone unturned.

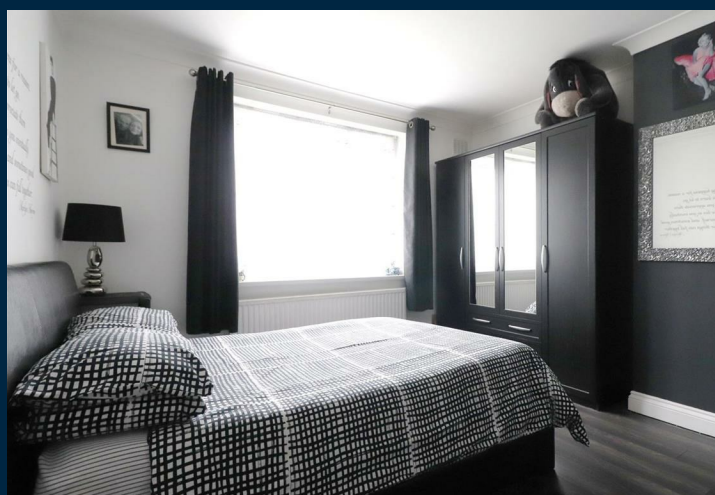
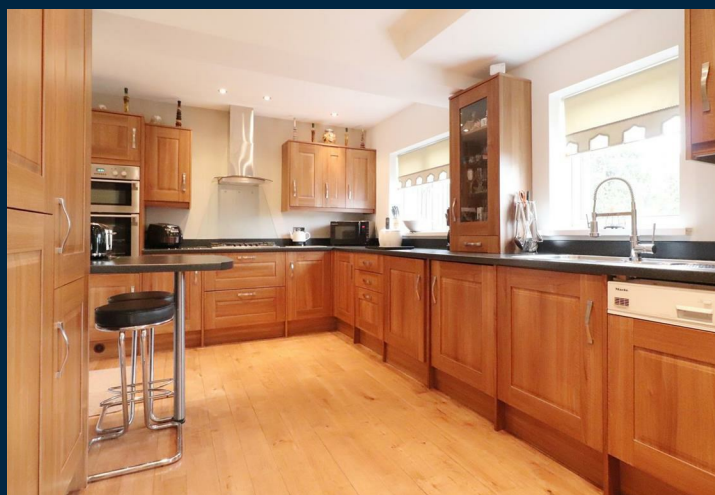
What you will appreciate here is the overall space in each room and as an added bonus, there is a summer house at the bottom of the garden making this the ideal space to work from home in.

The downstairs has two reception rooms, an extended kitchen/breakfast room and bedroom 4/study with an en suite shower room.

Upstairs has three separate bedrooms and a large bathroom. There is also a bonus loft area.

The garden is mainly laid to lawn with a patio area to the front and the summer house as previously mentioned.

The driveway to the front can fit 3 vehicles on it, in addition to plenty of on road parking.



- **FOUR BEDROOM SEMI**
- **BORDERS OF BEXLEYHEATH**
- **TWO RECEPTION ROOMS**
- **DOWNSTAIRS SHOWER ROOM/UPSTAIRS BATHROOM**
- **SUMMER HOUSE TO REAR**
- **EXTENDED KITCHEN/BREAKFAST ROOM**
- **STUNNING CONDITION**
- **LARGE LOFT AREA**
- **EPC-TBC**
- **1498 SQ FT**

