

rightmove

Zoopla.co.uk

PrimeLocation.com

onTheMarket.com



IMPORTANT: These property details are set out as a general guideline only and do not constitute any part of an offer or contract. Any services, equipment, fittings or central heating systems have not been tested and no warranty is given or implied that these are in working order. Buyers are advised to obtain verification from the solicitor or surveyor. Fixtures, fittings and other items are not included unless specified. All measurements, distances and areas are approximate, and for guidance only. Room measurements are taken to the nearest 3" and prospective buyers are advised to check these for any particular purpose, e.g fitted carpets and furniture.

**3 Princess Parade Crofton Road
Orpington
BR6 8NP**

**01689 850 111
locksbottom@anthonymartin.co.uk
anthonymartin.co.uk**

£575,000

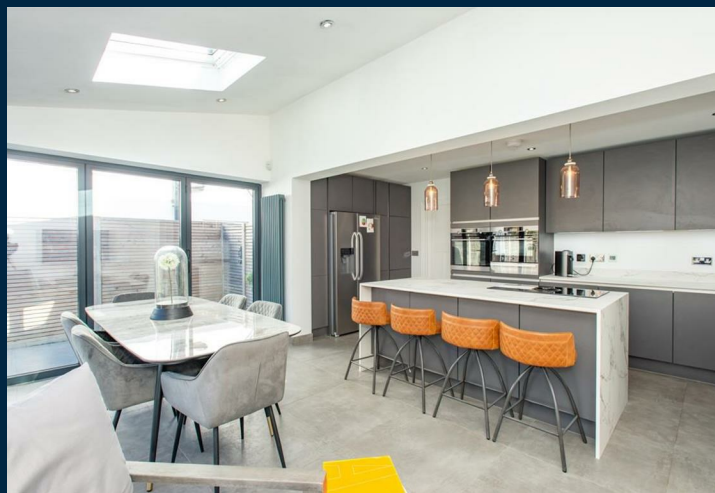
Bradford Close Bromley

This is a truly stunning, beautifully presented and extended three bedroom house offered to the market CHAIN FREE. It has been updated by the current owners creating a spacious modern family home that really does bring the outside in. In a quiet cul de sac location and within easy access of local amenities and transport it is the perfect location.

The ground floor offers a impressive integrated fitted kitchen/breakfast room, great for entertaining. The open plan space features separate sitting and dining areas with dual aspect bifold doors opening onto the terrace. The space has electric Velux windows flooding it with light and underfloor heating. This really is the hub of the home. Also for those who like the comfort of another living room to sit and relax in the evening, the lounge with bay window to the front finished with plantation shutters provides the ideal space. There is a guest cloakroom with laundry cupboard.

To the first floor the master bedroom has a bay window to the front and features plantation shutters creating a modern stylish space. There is a further double bedroom and single bedroom, both overlooking the garden. The bathroom is fully tiled with a walk in shower, wc and basin.

Outside the garden is mainly laid to lawn with a modern terrace that wraps round the side of the house, a great space for the warmer months.



- **Beautifully Presented**
- **Stunning Open Plan Kitchen/Diner**
- **3 Bedrooms**
- **Guest Cloakroom and Laundry**
- **Driveway**
- **CHAIN FREE**
- **Underfloor Heating**
- **Excellent Transport Links**
- **Close to Local Amenities**
- **EPC C69**

