

Whilst every attempt has been made to ensure the accuracy of the floor plan contained here, measurements of doors, windows, rooms and any other items are approximate and no responsibility is taken for any error, omission, or mis-statement. This plan is for illustrative purposes only and should be used as such by any prospective purchaser. The services, systems and appliances shown have not been tested and no guarantee as to their operability or efficiency can be given.
Made with Metropix ©2020



IMPORTANT: These property details are set out as a general guideline only and do not constitute any part of an offer or contract. Any services, equipment, fittings or central heating systems have not been tested and no warranty is given or implied that these are in working order. Buyers are advised to obtain verification from the solicitor or surveyor. Fixtures, fittings and other items are not included unless specified. All measurements, distances and areas are approximate, and for guidance only. Room measurements are taken to the nearest 3" and prospective buyers are advised to check these for any particular purpose, e.g fitted carpets and furniture.

16 Market Street
Dartford
DA1 1ET

01322 583 033
dartford@anthonymartin.co.uk
anthonymartin.co.uk

**Offers Over
£300,000**

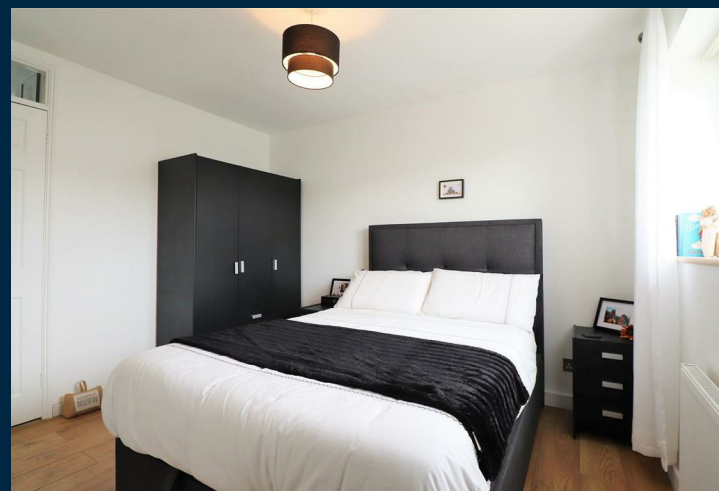
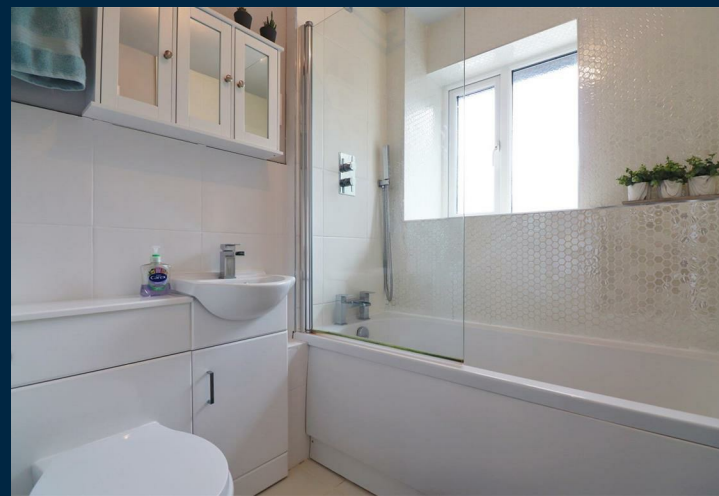
Chesterfield Drive

Dartford

With the option to buy full furnished this well presented two bedroom end of terrace house is situated in a highly desirable area in West Dartford close to the Grammar schools and also between Crayford and Dartford town centres. The property itself is within walking distance to local amenities and local transport links ideal for those commuters who need easy access to London. This is a perfect opportunity for first time buyers, investors or those that are looking to up size within the area and are looking for a property which has been updated throughout.

The ground floor offers a modern kitchen with fitted appliances as well as a recently decorated lounge/diner leading to the rear garden. The garden has been landscaped where you will find a patio area, lawn and a recently fitted decking area perfect for all your needs. The first floor offers a double bedroom and a single bedroom with fitted wardrobe space as well as a modern bathroom. To the front of the property you will find a driveway big enough for 2 cars, along with convenient side access to the garden.

Situated near to sought after primary and secondary schools. Dartford Grammar School - Dartford Grammar School for Girls - Leigh City Technology - Dartford Science & Technology College all sit within a mile of the property. St Anselm's Catholic Primary School - Dartford Bridge Community Primary School - The Gateway Primary Academy - Dartford Primary Academy all sitting within 1.5 Miles from the property. In addition, Dartford town centre and train station are within close proximity with Dartford Crossing and the A2 / M25 only a few minutes drive away.



- 2 Bedroom End Terrace House
- Option To Buy Furnished
- Driveway For 2 Cars
- Great Condition Throughout
- Lounge/Diner
- Low Maintenance Garden
- Perfect Starter Home
- Good Investment Opportunity
- West Dartford Location
- Good Transport Links

