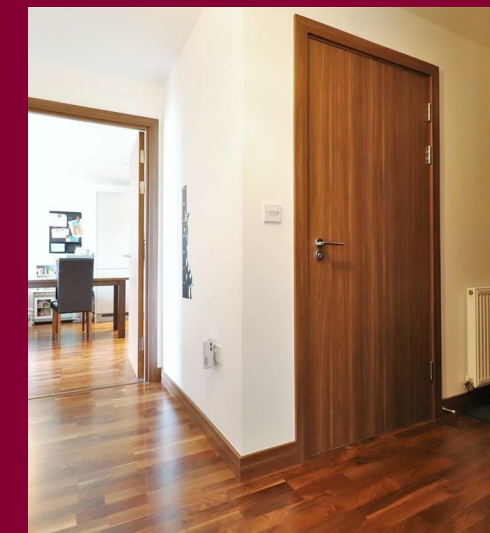


TOTAL APPROX. FLOOR AREA 774 SQ.FT. (71.9 SQ.M.)
 Whilst every attempt has been made to ensure the accuracy of the floor plan contained here, measurements of doors, windows, rooms and any other items are approximate and no responsibility is taken for any error, omission, or mis-statement. This plan is for illustrative purposes only and should be used as such by any prospective purchaser. The services, systems and appliances shown have not been tested and no guarantee as to their operability or efficiency can be given
 Made with Metropix ©2020



[rightmove](#)
[Zoopla.co.uk](#)
[PrimeLocation.com](#)
[OnTheMarket.com](#)



IMPORTANT: These property details are set out as a general guideline only and do not constitute any part of an offer or contract. Any services, equipment, fittings or central heating systems have not been tested and no warranty is given or implied that these are in working order. Buyers are advised to obtain verification from the solicitor or surveyor. Fixtures, fittings and other items are not included unless specified. All measurements, distances and areas are approximate, and for guidance only. Room measurements are taken to the nearest 3" and prospective buyers are advised to check these for any particular purpose, e.g fitted carpets and furniture.

16 Market Street
 Dartford
 DA1 1ET

01322 583 033
dartford@anthonymartin.co.uk
anthonymartin.co.uk

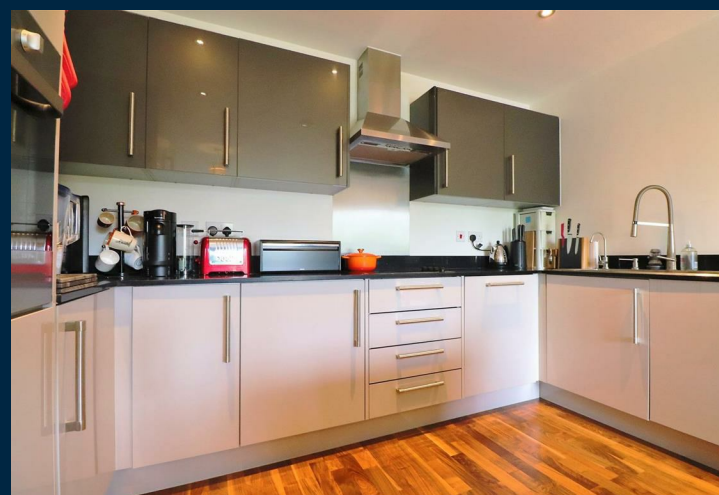
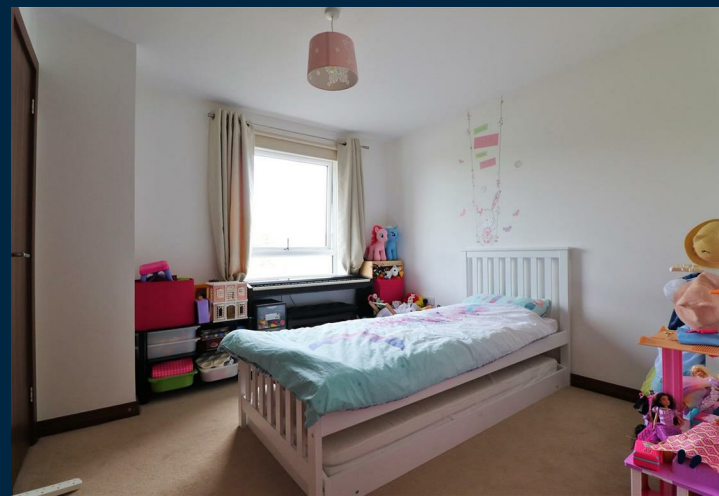
**Offers Over
 £250,000**

Creek Mill Way

Dartford

A luxury first floor two double bedroom apartment (774Sq.Ft) with allocated parking for two cars and balcony, in the sought after Creek Mill Way development in Dartford. This property is beautifully designed with a contemporary open-plan living area, a high quality designer kitchen and integrated appliances, and a beautiful high specification bathroom. Both bedrooms are double with the master bedroom having a modern En Suite shower room and fitted wardrobes.

Less than 10 min walk to Dartford station, this is a commuters dream with mainline services into London and conveniently close to the A2 and M25. Within easy reach of shops, gyms and other recreational venues, this development is perfectly placed for an active and fulfilling modern lifestyle. Just under 30mins drive away from The City (Victoria and Charing Cross). Also, it takes only one hour to reach London City Airport, London Stansted, London Gatwick and Heathrow Airports. Serenity and convenience are what describe this development.



- Allocated Parking For Two Cars
- Good Condition Throughout
- Close To Station
- Open Plan Layout
- Integrated Appliances
- Two Double Bedrooms
- En Suite Shower Room
- First Floor Flat
- Long Lease
- Great Views

