

rightmove

Zoopa.co.uk

PrimeLocation.com

OnTheMarket.com



IMPORTANT: These property details are set out as a general guideline only and do not constitute any part of an offer or contract. Any services, equipment, fittings or central heating systems have not been tested and no warranty is given or implied that these are in working order. Buyers are advised to obtain verification from the solicitor or surveyor. Fixtures, fittings and other items are not included unless specified. All measurements, distances and areas are approximate, and for guidance only. Room measurements are taken to the nearest 3" and prospective buyers are advised to check these for any particular purpose, e.g fitted carpets and furniture.



45 High Street
Swanscombe
DA10 0AG

01322 473355
swanscombe@anthonymartin.co.uk
anthonymartin.co.uk

**Offers In Excess Of
£325,000**

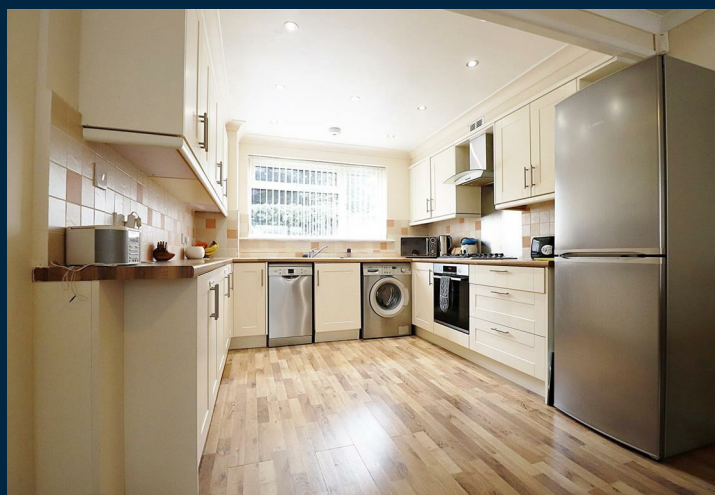
Church Road Greenhithe

Located 0.1 MILES TO STONE CROSSING STATION, is this fabulous terrace family home.

This beautiful property boasts three sizeable bedrooms and a family bathroom to the first floor. Whilst the ground floor benefits from an entrance hall, that leads onto an open plan lounge / kitchen room with doors leading you to the beautiful conservatory and the rear garden. The generous kitchen offers an abundance of storage, so cooking will be easy for all the family. A spacious lounge area can be used for both dining and relaxing with the option of using the conservatory as a second reception space. The west facing rear garden is a beautiful suntrap for you to enjoy entertaining with friends.

Located within walking distance to Stone Crossing and village area which benefits from three local public houses which are all very welcoming and offer a nice place to stop for dinner. There are many local walks through Worcester Park or along the River Thames promenade. Close by are many schools including Knockhall Academy, Craylands and Stone St Mary's Primary Schools along with Ebbsfleet Academy Secondary School. Ebbsfleet International train station is a short drive away and will allow you access to Central London in 19 minutes or Paris in 2 hours using the high speed train services. Bluewater Shopping Centre is filled with shops, restaurants and entertainment for all ages and this home is also very well connected to the major road network, locally.

Please call Anthony Martin Estate Agents now to arrange a viewing. EPC rating awaited.



- **Family Terraced House**
- **Three Sizeable Bedrooms**
- **Open Plan Lounge / Kitchen**
- **Conservatory And Private Garden**
- **Modern Bathroom And Downstairs Cloakroom**
- **Walking To Stone Crossing Station**
- **Close To Local Amenities**
- **Near To Schools**
- **Cul-De-Sac Location**
- **EPC Awaited**

