

IMPORTANT: These property details are set out as a general guideline only and do not constitute any part of an offer or contract. Any services, equipment, fittings or central heating systems have not been tested and no warranty is given or implied that these are in working order. Buyers are advised to obtain verification from the solicitor or surveyor. Fixtures, fittings and other items are not included unless specified. All measurements, distances and areas are approximate, and for guidance only. Room measurements are taken to the nearest 3" and prospective buyers are advised to check these for any particular purpose, e.g fitted carpets and furniture.

Kirby Road Dartford

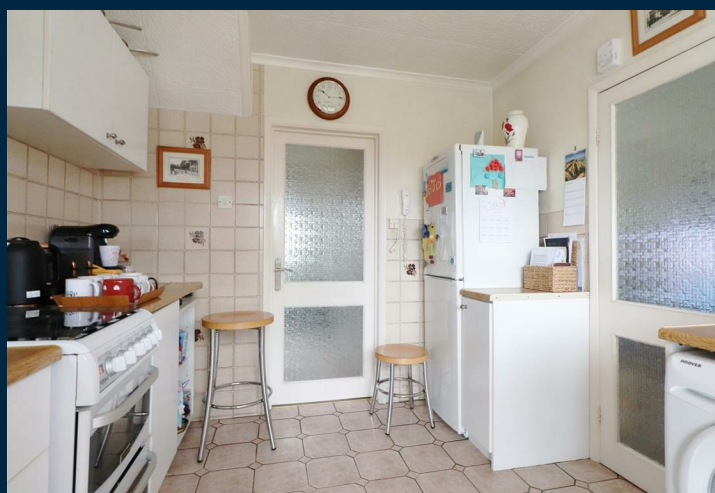
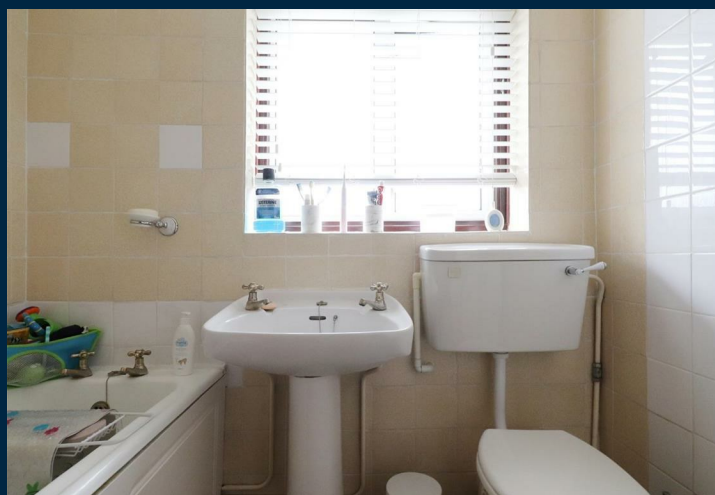
**--No More Viewings, Open House
Fully Booked--**

Located on the Stone/Dartford borders is this fantastic link-terrace family home. The ground floor benefits from a hallway that leads you to the separate kitchen, followed by a spacious bay fronted lounge that has been opened up to the dining area offering plenty of space for the family to socialize. From the kitchen you also have access to a sizable and secluded rear garden. In addition, to the front is a paved driveway to suit two vehicles along with access down the side of the property to the garden.

Upstairs the property boasts two really good sized double bedrooms with the second offering fitted cupboard space. Off the first floor landing is also a family bathroom with a shower over the bath. This house is perfect for a young couple looking to get on the ladder and start a family, or even an investor looking to add to their portfolio.

The abode is near to highly sought after primary schools such as The Brent Primary, Fleetdown along with Leigh Academy Secondary School. Greenhithe train station, Stone and Ebbsfleet International train stations are also close as well as Bluewater Shopping Centre, Dartford Crossing, the A2 and M25.

Please call Anthony Martin estate agents now to arrange a viewing.



- Chain Free
- 2 Double Bedrooms
- Upstairs Bathroom
- Driveway
- Sizable Garden
- Ideal For FTB
- Good Transport Links
- Viewing Highly Recommended

