

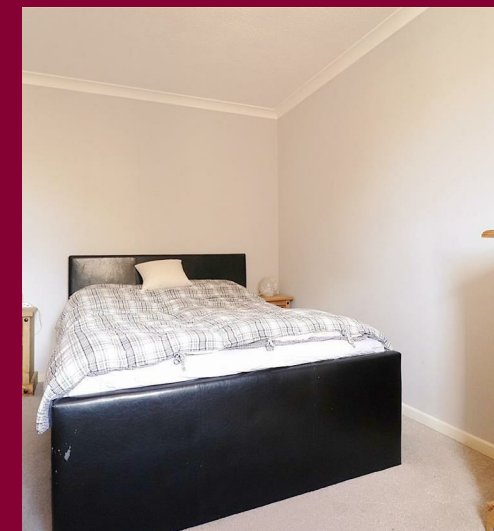
TOTAL FLOOR AREA: 498 sq.ft. (46.3 sq.m.) approx.
 Whilst every attempt has been made to ensure the accuracy of the floorplan contained here, measurements of doors, windows, rooms and any other items are approximate and no responsibility is taken for any error, omission or mis-statement. This plan is for illustrative purposes only and should be used as such by any prospective purchaser. The services, systems and appliances shown have not been tested and no guarantee as to their operability or efficiency can be given.
 Made with Metropix ©2021

rightmove

Zoopa.co.uk

PrimeLocation.com

onTheMarket.com



IMPORTANT: These property details are set out as a general guideline only and do not constitute any part of an offer or contract. Any services, equipment, fittings or central heating systems have not been tested and no warranty is given or implied that these are in working order. Buyers are advised to obtain verification from the solicitor or surveyor. Fixtures, fittings and other items are not included unless specified. All measurements, distances and areas are approximate, and for guidance only. Room measurements are taken to the nearest 3" and prospective buyers are advised to check these for any particular purpose, e.g fitted carpets and furniture.

9 Midfield Parade, Mayplace Road East
 Bexleyheath
 DA7 6NB

01322 557457
 barnehurst@anthonymartin.co.uk
 anthonymartin.co.uk

Offers Over
£220,000

**Drummond Close
Erith**

**** OFFERS OVER £220,000 ****

**FREEHOLD HOUSE WITH A
SERVICE CHARGE OF £48 PER
MONTH**

Perfect starter home!

**Completely freehold is this
one bedroom link detached
house.**

**Situated in Erith with it's
own private parking space,
this home consists of lounge,
kitchen, upstairs bathroom
and bedroom.**

**The garden is low
maintenance , mainly paved,
fully fenced and very private.**

**An extra bonus is that this
home is being offered CHAIN
FREE!!**

**Call the Barnehurst Sales
Team on 01322 557457 to
book in today.**



- **Linked Detached House**
- **Lounge**
- **New Kitchen**
- **Upstairs Bathroom**
- **Bedroom**
- **Private Parking**
- **Low Maintenance Garden**
- **Within Reach to Local Amenities**
- **Neat Decor**
- **CHAIN FREE!!**

