

IMPORTANT: These property details are set out as a general guideline only and do not constitute any part of an offer or contract. Any services, equipment, fittings or central heating systems have not been tested and no warranty is given or implied that these are in working order. Buyers are advised to obtain verification from the solicitor or surveyor. Fixtures, fittings and other items are not included unless specified. All measurements, distances and areas are approximate, and for guidance only. Room measurements are taken to the nearest 3" and prospective buyers are advised to check these for any particular purpose, e.g fitted carpets and furniture.



Turpington Lane Bromley

Anthony Martin are delighted to bring to the market this beautifully presented first floor 2 double bedroom purpose built apartment ideally located with excellent transport links, good schools catchment and local amenities.

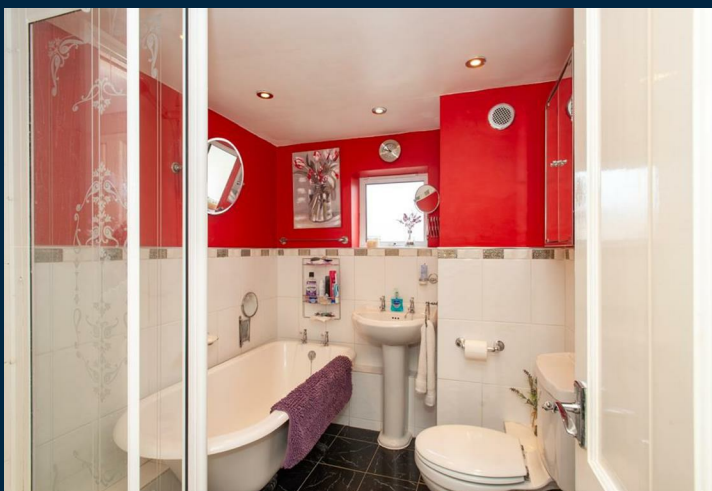
This south facing property is light and bright with 2 good sized double bedrooms.

The reception room is flooded with light from the large picture window. There is ample space for sitting and dining and the feature fireplace is the focal point of the room.

The kitchen is part integrated with a range of base and wall units, with space for a dishwasher and washing machine.

There are two good sized double bedrooms, one with built in storage.

The property further benefits from double glazing, gas central heating and secure storage. There is ample free parking and communal grounds.



- **2 Double Bedrooms**
- **Long Lease**
- **Beautifully Presented**
- **Modern Part Integrated Kitchen**
- **Bathroom with Roll Top Bath**
- **Excellent Transport Links**
- **Close To Local Shops**
- **Communal Grounds**
- **Gas Central Heating**
- **EPC C78**

