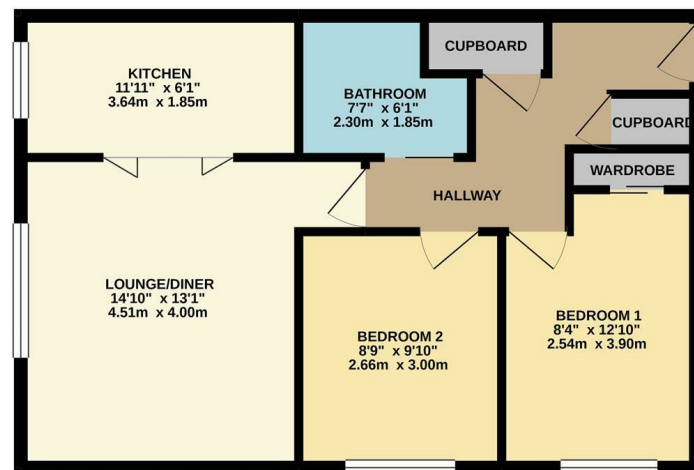


GROUND FLOOR  
563 sq.ft. (52.3 sq.m.) approx.



TOTAL FLOOR AREA: 563 sq.ft. (52.3 sq.m.) approx.  
Whilst every attempt has been made to ensure the accuracy of the floorplan, variations in room dimensions, door and window positions, and any other items are approximate and no responsibility is taken for any errors, omissions or misstatements. This plan is for illustrative purposes only and should be used as such for any prospective purchaser. The layout, fixtures and fittings shown are not intended to be a guarantee as to their operability or efficiency can be given.  
Made with Metaplan 11/2022

rightmove

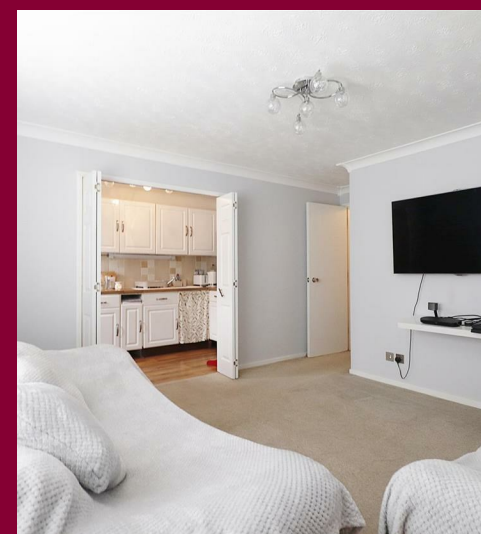
Zoopa.co.uk

PrimeLocation.com

onTheMarket.com



**IMPORTANT:** These property details are set out as a general guideline only and do not constitute any part of an offer or contract. Any services, equipment, fittings or central heating systems have not been tested and no warranty is given or implied that these are in working order. Buyers are advised to obtain verification from the solicitor or surveyor. Fixtures, fittings and other items are not included unless specified. All measurements, distances and areas are approximate, and for guidance only. Room measurements are taken to the nearest 3" and prospective buyers are advised to check these for any particular purpose, e.g fitted carpets and furniture.



7 Bourne Road  
Bexley  
DA5 1LW

**01322 47 99 33**  
**bexley@anthonymartin.co.uk**  
**anthonymartin.co.uk**

**Offers In Excess Of**  
**£265,000**



## **Parish Gate Drive Sidcup**

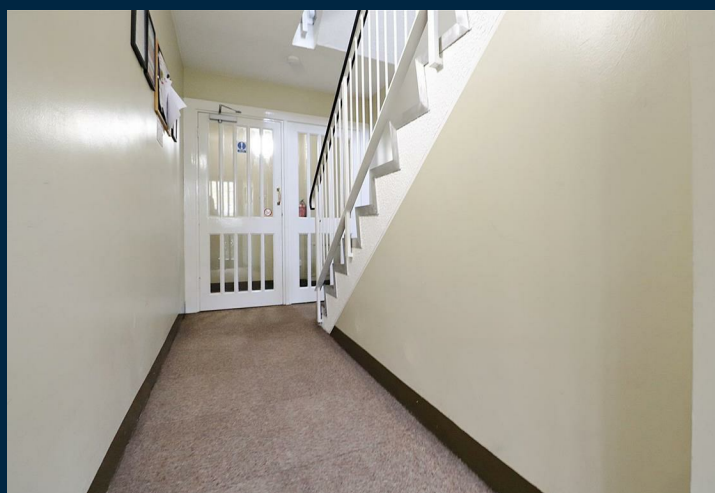
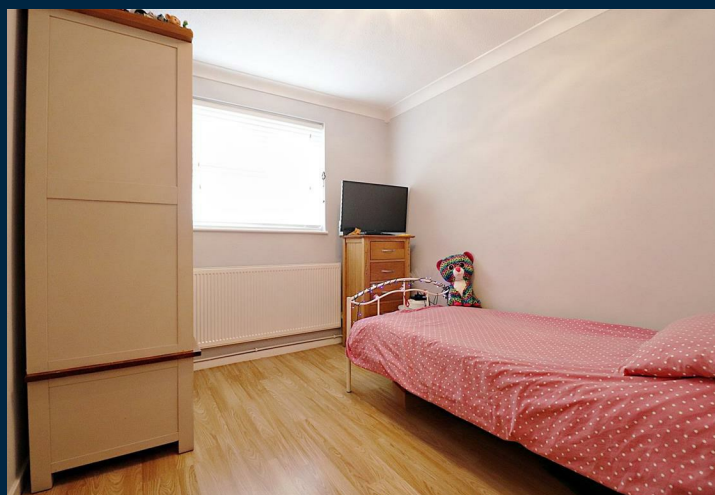
**Offered to the market is this well present Two Bedroom ground floor flat. located near to Blackfen High Street.**

**Accommodation comprises - Entrance hall, Lounge Diner, kitchen, Two double Bedrooms and Bathroom.**

**externally you have Two allocated parking bays.**

**location- you are 1.1 miles from Falconwood Railway station which is approximately 22 Minutes to London Bridge, Also, within walking distance you have Alderwood Primary School - Days Lane Primary School - University of Greenwich Avery Hill Campus.**

**Please call today to arrange your viewing.**



- **GROUND FLOOR FLAT**
- **ALLOCATED PARKING SPACES**
- **DOUBLE GLAZED**
- **51 SQ MT**
- **1. MILES TO FALCONWOOD RAILWAY STATION**
- **CLOSE TO SCHOOLS**
- **BLACKFEN HIGH STREET JUST A SHORT WALK AWAY**

