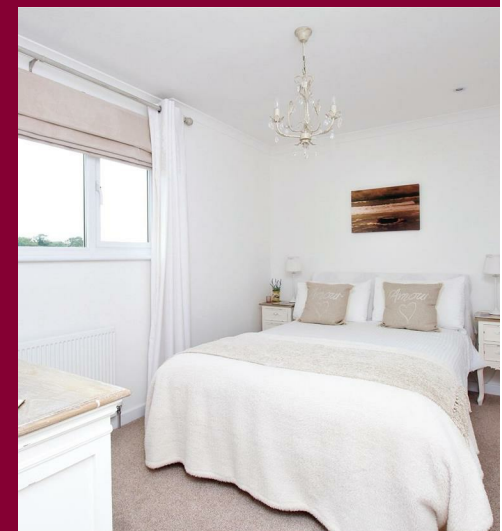


rightmove

Zoopa.co.uk

PrimeLocation.com

onTheMarket.com



**IMPORTANT:** These property details are set out as a general guideline only and do not constitute any part of an offer or contract. Any services, equipment, fittings or central heating systems have not been tested and no warranty is given or implied that these are in working order. Buyers are advised to obtain verification from the solicitor or surveyor. Fixtures, fittings and other items are not included unless specified. All measurements, distances and areas are approximate, and for guidance only. Room measurements are taken to the nearest 3" and prospective buyers are advised to check these for any particular purpose, e.g fitted carpets and furniture.

**9 Midfield Parade, Mayplace Road East  
Bexleyheath  
DA7 6NB**

**01322 557457  
barnehurst@anthonymartin.co.uk  
anthonymartin.co.uk**

**Guide Price  
£375,000**



# Taunton Close

## Bexleyheath

**As far as locations go, they don't get much better than this. Quiet cul de sac, directly opposite fields/golf course and great sized living accommodation throughout. What more would you want?**

**The nearest train station is within a mile radius and is that of Barnehurst which has superb links to London and even better still, being close to the beginning of the line means you are more than likely to get seated along the way.**

**Internally there is a superb sized open plan lounge which leads to a dining room. This in turn leads to the kitchen and this is the room that overlooks the garden.**

**Upstairs has three great sized bedrooms and a bathroom. The icing on the cake are the views from bedroom one and three.**

**Wake up and less than a stretch later you are greeted by a sea of green opposite.**

**To the rear is a low maintenance yet stunning garden and a garage which has rear vehicular access.**



- **3 Bedroom Home**
- **Cul De Sac**
- **Opposite Fields/Golf Course**
- **Upstairs Bathroom**
- **Garage To Rear**
- **Large Open Plan Lounge**
- **Superb Views**
- **1146 SQ FT**
- **EPC: C**

