

- **2 Double Bedrooms**
- **Fitted Wardrobes**
- **Modern Shower Room**
- **New Kitchen**
- **Share of Freehold**
- **Private Garden**
- **Garage**
- **New Boiler**
- **Excellent Transport Links**
- **EPC D66**



**82 Hastings Road,
Bromley Common, BR2 8NB**

the owners secret...

why you'll like it...

Anthony Martin are delighted to bring to the market this share of freehold 2 double bedroom ground floor maisonette located on Bromley Common.

The porch leads into the entrance hall. The modern part integrated kitchen overlooks the private rear garden and features a range of base and wall units. The lounge is situated to the front of the property with a large window and French doors, and provides space for sitting and a separate dining area.



your new home

Ground Floor

Porch

Entrance Hall

Kitchen

10'5" x 8'6"

Lounge

18'4" x 12'1"

Bathroom

6'10" x 6'6"

Bedroom One

12'1" x 11'1"

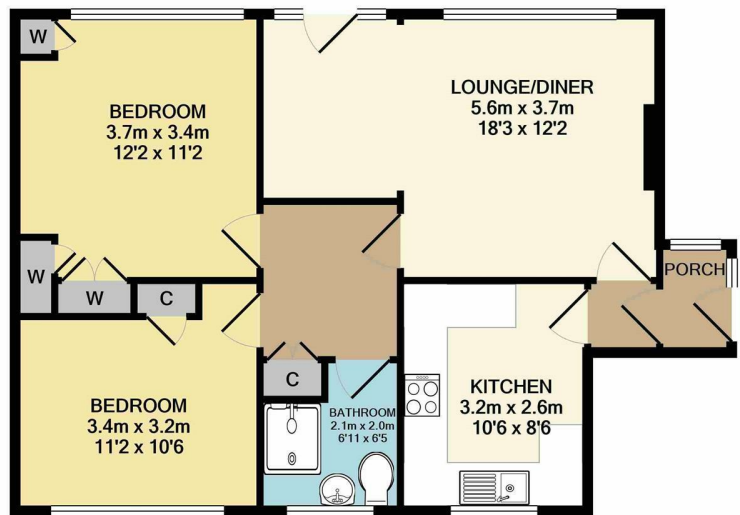
Bedroom Two

11'1" x 10'5"

Ourtside

Garden

Garage En Bloc



TOTAL APPROX. FLOOR AREA 60.8 SQ.M. (654 SQ.FT.)
Measurements are approximate. Not to scale. Illustrative purposes only
Made with Metropix ©2020

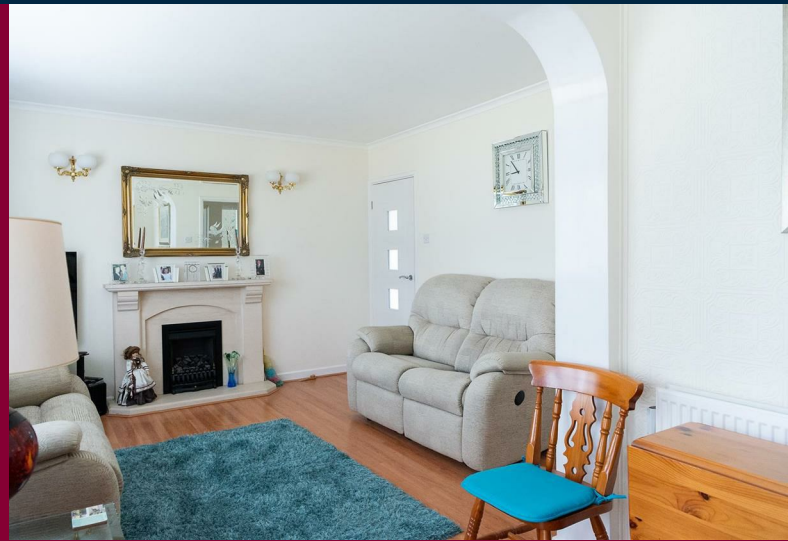
why you'll like it...

There are two double bedrooms with fitted wardrobes and a modern shower room.

Outside the private garden is in excess of 100 foot with a terrace and mainly laid to lawn. To the rear of the garden there is a further patio and large shed and a footpath which leads to the garage en bloc.

The property is accessed by footpath to the front from Trinity Close or from the garage to the rear of the property.

close to home



These property details are set out as a general guideline only and do not constitute any part of an offer or contract. Any services, equipment, fittings or central heating systems have not been tested and no warranty is given or implied that these are in working order. Buyers are advised to obtain verification from the solicitor or surveyor. Fixtures, fittings and other items are not included unless specified. All measurements, distances and areas are approximate, and for guidance only. Room measurements are taken to the nearest 3" and prospective buyers are advised to check these for any particular purpose, e.g fitted carpets and furniture.

**3 Princess Parade Crofton Road,
Orpington, BR6 8NP**

01689 850 111
locksbottom@anthonymartin.co.uk