

IMPORTANT: These property details are set out as a general guideline only and do not constitute any part of an offer or contract. Any services, equipment, fittings or central heating systems have not been tested and no warranty is given or implied that these are in working order. Buyers are advised to obtain verification from the solicitor or surveyor. Fixtures, fittings and other items are not included unless specified. All measurements, distances and areas are approximate, and for guidance only. Room measurements are taken to the nearest 3" and prospective buyers are advised to check these for any particular purpose, e.g fitted carpets and furniture.



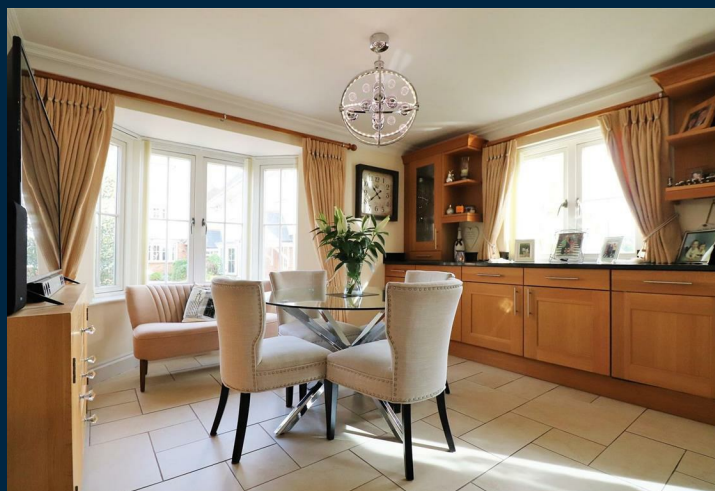
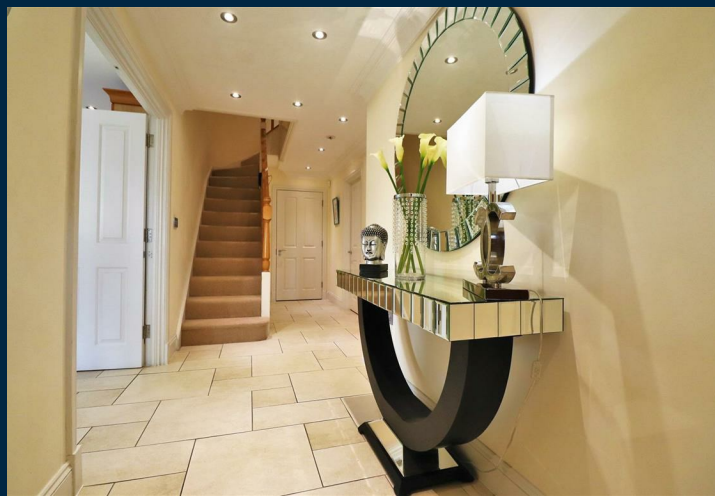
Chaplin Court Dartford

This modern double fronted five bedroom home is truly stunning and is 2527 sq.ft in size, perfect for the growing family. Situated in a exclusive private gated development, this modern home is set over three levels and has so much on offer. On the ground floor there is a lounge, dining room, impressive kitchen/breakfast room, conservatory and a W/C. The first floor has four double bedrooms, two en-suites and a family bathroom. On top floor is the amazing master bedroom with dressing room and en-suite. Outside there is a rear garden, garage and driveway.

The entire home has been made with no expense spared, with high quality fixture and fittings, under floor heating, high spec kitchen and integrated appliances. This home definitely has the wow factor.

Once you enter this wonderful home we are sure you will be very pleased with what's on offer.

Located in the sought after location of Sutton at Hone on the outskirts of Dartford and Wilmington. Ideally located for commuters with Farningham train station 0.9 miles away and major transport links such as the M25/A2 just a short drive away. There are local amenities close by and a bus stop within walking distance.



- Five Double Bedroom
- Double Front Detached Family Home
- 2527 SQ.FT
- Over Three Levels
- Private Gated Development
- Located In The Sought After Village Of Sutton At Hone
- Three Reception Rooms
- Four Bathrooms
- Conservatory
- Garage & Driveway

