

# Anthony Martin

Estate Agents



---

Clydesdale Way, Belvedere  
£1,200

---



**Anthony Martin**  
Estate Agents

Midfield Parade, 9 Mayplace Road East, Bexleyheath, Kent, DA7 6NB

01322 557457

[barnhurst@anthonymartin.co.uk](mailto:barnhurst@anthonymartin.co.uk)

[www.anthonymartin.co.uk](http://www.anthonymartin.co.uk)



---

## Clydesdale Way, Belvedere

---

- Stunning Development
- 2 Bathrooms
- Great Location
- EPC - B
- 2 Double Bedrooms
- Allocated Parking
- Call Today

Anthony Martin Estate Agents are delighted to offer you 'TO LET' this stunning 2 bedroom apartment situated on the first floor of a beautiful new development in Belvedere. The block itself has 1 underground parking space and is superbly located to local amenities, such as a gym, Carvery and the local supermarket isn't to far away!

Internally, the property boasts 2 double bedrooms, 1 with an En-Suite. The Living Room is open plan with a balcony overlooking the development.

Although this property is on the second floor, the block does benefit from a lift. Please call us today to book your internal viewing on 01322 557 457 (opt 2)



Communal Entrance

Hallway

Kitchen

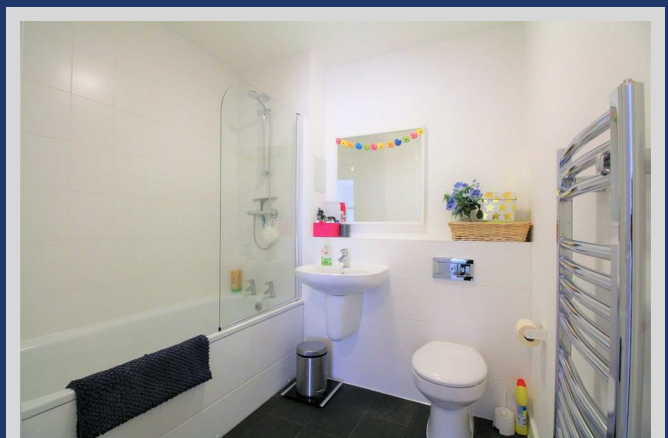
Living Room

Bedroom 1

En-Suite

Bedroom 2

Bathroom







IMPORTANT: we would like to inform prospective purchasers that these sales particulars have been prepared as a general guide only. A detailed survey has not been carried out, nor the services, appliances and fittings tested. Room sizes should not be relied upon for furnishing purposes and are approximate. If floor plans are included, they are for guidance only and illustration purposes only and may not be to scale. If there are any important matters likely to affect your decision to buy, please contact us before viewing the property.