

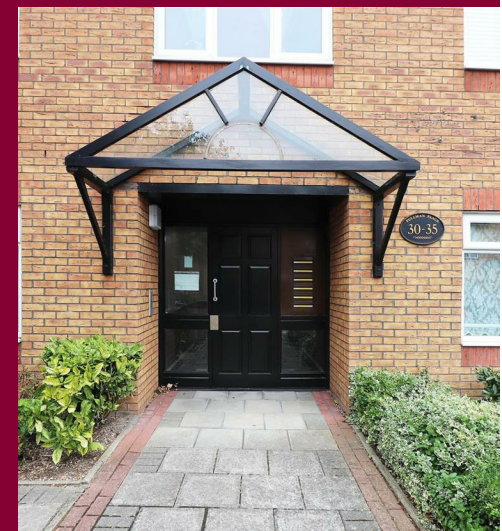
TOTAL APPROX. FLOOR AREA 438 SQ.FT. (40.7 SQ.M.)
Whilst every attempt has been made to ensure the accuracy of the floor plan contained here, measurements of doors, windows, rooms and any other items are approximate and no responsibility is taken for any error, omission, or mis-statement. This plan is for illustrative purposes only and should be used as such by any prospective purchaser. The services, systems and appliances shown have not been tested and no guarantee as to their operability or efficiency can be given.
Made with Metropix ©2020

rightmove

Zoopla.co.uk

PrimeLocation.com

onTheMarket.com



IMPORTANT: These property details are set out as a general guideline only and do not constitute any part of an offer or contract. Any services, equipment, fittings or central heating systems have not been tested and no warranty is given or implied that these are in working order. Buyers are advised to obtain verification from the solicitor or surveyor. Fixtures, fittings and other items are not included unless specified. All measurements, distances and areas are approximate, and for guidance only. Room measurements are taken to the nearest 3" and prospective buyers are advised to check these for any particular purpose, e.g fitted carpets and furniture.

7 Bourne Road
Bexley
DA5 1LW

01322 47 99 33
bexley@anthonymartin.co.uk
anthonymartin.co.uk

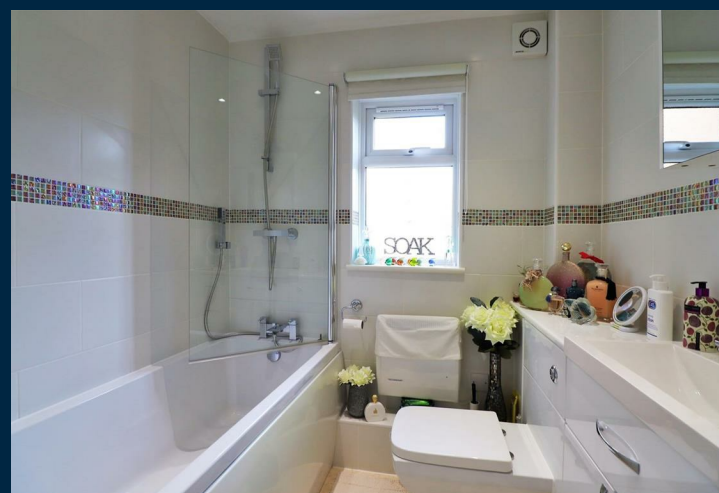
**Offers In Excess Of
£250,000**

Pullman Place, Eltham London

A commuter's dream located within approximately five minutes' walk to Eltham Railway station. (Zone 4) a well-presented ground floor one-bedroom apartment set within a popular development of pullman place. Internally the accommodation comprises of a spacious double bedroom with fitted wardrobes. well-presented three-piece bathroom, and a spacious reception room and kitchen.

Additional benefits include allocated off street parking, double glazing throughout, well maintained communal areas.

This apartment is offered in good decorative order throughout and is ideally suited to first time buyers or buy to let investors. Offered with the share of Freehold.



- **CLOSE TO ELTHAM RAILWAY STATION**
- **GROUND FLOOR**
- **ALLOCATED PARKING BAY**
- **CLOSE TO SHOPS**
- **WITHIN WALKING DISTANCE TO ELTHAM HIGH STREET**
- **DOUBLE GLAZED**
- **DOUBLE BEDROOM**

