

TOTAL APPROX. FLOOR AREA 581 SQ.FT. (54.0 SQ.M.)
 Whilst every attempt has been made to ensure the accuracy of the floor plan contained here, measurements of doors, windows, rooms and any other items are approximate and no responsibility is taken for any error, omission, or mis-statement. This plan is for illustrative purposes only and should be used as such by any prospective purchaser. The services, systems and appliances shown have not been tested and no guarantee as to their operability or efficiency can be given.
 Made with Metropix ©2020

rightmove

Zoopla.co.uk

PrimeLocation.com

onTheMarket.com



IMPORTANT: These property details are set out as a general guideline only and do not constitute any part of an offer or contract. Any services, equipment, fittings or central heating systems have not been tested and no warranty is given or implied that these are in working order. Buyers are advised to obtain verification from the solicitor or surveyor. Fixtures, fittings and other items are not included unless specified. All measurements, distances and areas are approximate, and for guidance only. Room measurements are taken to the nearest 3" and prospective buyers are advised to check these for any particular purpose, e.g fitted carpets and furniture.



**45 High Street
 Swanscombe
 DA10 0AG**

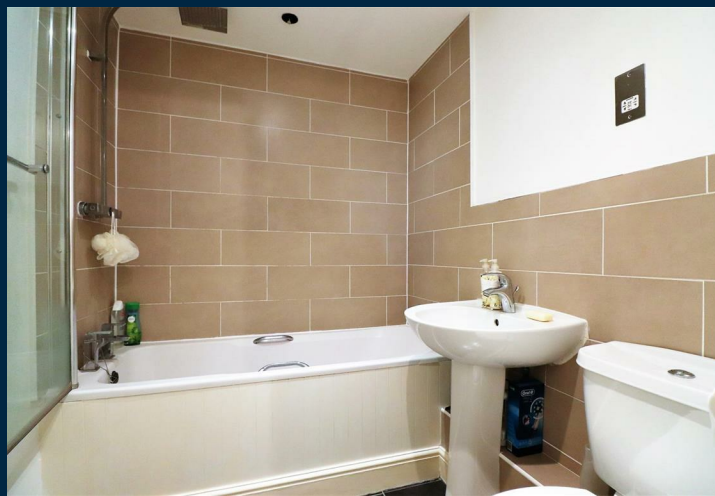
**01322 473355
 swanscombe@anthonymartin.co.uk
 anthonymartin.co.uk**

**Offers Over
 £200,000**

Covesfield Gravesend

Spacious Two bedroom modern ground floor apartment. Set on the popular Heritage Park development. Offered with no onward chain and ready to move in straight away. The property benefits from secure entry phone, entrance hallway, spacious lounge/diner, modern fitted kitchen, modern bathroom and two good size bedrooms. Outside there is allocated parking.

Located close to local amenities, good access to Ebbsfleet International for the high speed links and good motorway links to the A2/M25 and close to Gravesend Town Centre/Bluewater Shopping Centre.



- **Two Bedroom**
- **Ground Floor Modern Apartment**
- **Lounge/Diner**
- **Fitted Kitchen**
- **Modern Bathroom**
- **Parking**
- **No Onward Chain**
- **Well Presented Throughout**
- **Close To Mainline Station**
- **Close To Gravesend Town Centre**

