

Energy Efficiency Rating		Current	Potential
Very energy efficient - lower running costs			
(92 plus) A		84	84
(81-91) B			
(69-80) C			
(55-68) D			
(39-54) E			
(21-38) F			
(1-20) G			
Not energy efficient - higher running costs			
England & Wales		EU Directive 2002/91/EC	
Environmental Impact (CO ₂) Rating			
Very environmentally friendly - lower CO ₂ emissions			
(92 plus) A		91	91
(81-91) B			
(69-80) C			
(55-68) D			
(39-54) E			
(21-38) F			
(1-20) G			
Not environmentally friendly - higher CO ₂ emissions			
England & Wales		EU Directive 2002/91/EC	



STERLING ROAD
BEXLEYHEATH
£1,295



rightmove.co.uk
The UK's number one property website

Zoopla.co.uk

PrimeLocation.com

onTheMarket.com

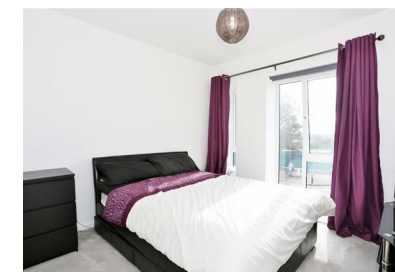
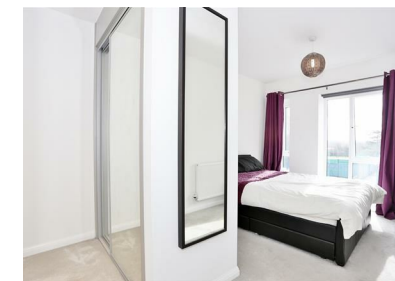
Anthony Martin
Estate Agents

020 8303 3338
bexleyheath@anthonymartin.co.uk
www.anthonymartin.co.uk

2 Pickford Lane, Bexleyheath, Kent, DA7 4QW

IMPORTANT: we would like to inform prospective purchasers that these sales particulars have been prepared as a general guide only. A detailed survey has not been carried out, nor the services, appliances and fittings tested. Room sizes should not be relied upon for furnishing purposes and are approximate. If floor plans are included, they are for guidance only and illustration purposes only and may not be to scale. If there are any important matters likely to affect your decision to buy, please contact us before viewing the property.

Anthony Martin
Estate Agents



Anthony Martin Estate Agents are delighted to offer you TO LET this stunning 2 bedroom first floor apartment which is available for immediate occupation. Being offered FURNISHED, the apartment boasts 2 Double Bedrooms, Living Room and kitchen which is all open plan. The property also benefits from two bathrooms, with one being an en suite.

Further benefits include; a balcony, allocated parking along with a lift inside the block. Please call us today on 0208 303 3338 (opt 2) to book your internal viewing.

2 BEDROOMS • 1 RECEPTION ROOMS • 2 BATHROOMS

STERLING ROAD

BEXLEYHEATH

- 2 Bedroom First Floor Apartment
- Superb Location
- Allocated Parking
- 2 Double Bedrooms
- 2 Bathrooms
- Balcony
- Available Early November
- Call Today
- EPC - B
- Furnished or Unfurnished

